



PURE **VISTA**
Glass Railing Specialists

GLASS Balustrade Catalogue

About Us

Pure Vista is a highly successful family owned company that has been supplying high quality balustrade systems to clients all over the world for more than thirteen years.

Our innovative products fill a gap in the marketplace to meet the needs of modern architecture and health and safety legislation, in a beautiful and unobtrusive way. We take great pride in bringing the latest glass railing systems to you, competitively priced with unparalleled technical support and the personal service you would expect from a reputable family business.

Quality Products

We design and manufacture the most pioneering range of patented solutions for architectural glass installation, using only the highest quality materials. Our frameless glass balustrade products are vigorously tested and meet all required national and international building standards, giving you peace of mind.

Cad. Stock. Tested.

All our products have CAD files available to download or if you are specifically looking for a certain product, get in contact and we can send you what you need.

This ranges from DXF, DWG, BIM and PDF. We are more than happy to look over any drawings and offer installation advice, making sure the installation will be secure and meet the design load.

We can also assist in making comments to the waterproofing and find suggestions to prevent water ingress.

Pure Vista holds an extensive stock range to meet all project demands. In most cases we are able to ship smaller orders next-day and for larger orders 3-5 days.

All our systems are tested using a variety of glass types at a range of heights. All our systems go through a rigorous in-house test programme ensuring a completely safe system can be applied to market.

Once satisfied with the system we test the product with 3rd party, accredited, laboratories in global locations. This ensures almost any scenario is covered without a requirement of further testing.

Contents

01	SPIG-LITE^{advanced} INTRODUCTION	04
	SPIG-LITE^{advanced} KEY BENEFITS	05
	SPIG-LITE^{advanced} APPLICATIONS	05
	SPIG-LITE^{advanced} INSTALLATION GUIDE	06
	SPIG-LITE^{advanced} TECHNICAL DRAWINGS	06
	
02	POSIglaze INTRODUCTION	08
	POSIglaze KEY BENEFITS	09
	POSIglaze APPLICATIONS	09
	POSIglaze INSTALLATION GUIDE	10
	POSIglaze TECHNICAL DRAWINGS	10
	
03	R-LOCK INTRODUCTION	16
	R-LOCK KEY BENEFITS	17
	R-LOCK APPLICATIONS	17
	R-LOCK INSTALLATION GUIDE	18
	R-LOCK TECHNICAL DRAWINGS	18
	
04	MEGA^{grip} INTRODUCTION	24
	MEGA^{grip} KEY BENEFITS	25
	MEGA^{grip} APPLICATIONS	25
	MEGA^{grip} INSTALLATION GUIDE	26
	MEGA^{grip} TECHNICAL DRAWINGS	26
	BULLETguard	29
	BLASTguard	30
	
05	HANDRAIL	31
	GLASS HARDWARE	32
	GLASS STIFFENERS	33
	DRILLING	34
	BOLTS	35
	INTERNAL THREADED ROD SYSTEM	36
	STEEL FIXING	37
	
06	Balcony Seal®	38
	

01 SPIG-LITE^{advanced}

INTRODUCTION



SPIG-LITE^{advanced} is extremely simple and cost effective to install due to it being spigot-based, as opposed to a channel based configuration. Without a channel, there is a greater percentage of glass visible to maximise your view. The individual spigots allow free water flow making them perfect for wet areas such as poolside or an exposed balcony, keeping the glass out of submersion.

Mechanised by a two-sided screw-clamp adjustment system, each individual panel of glass in the **SPIG-LITE^{advanced}** system can be horizontally adjusted once in position, providing an accurate installation and flawless finish. Ideal for single family domestic dwellings where up to 0.74kN force loading capability is required.



01 SPIG-LITEadvanced

KEY BENEFITS



FAST AND EASY TO INSTALL AND ADJUST

One of the most simple balustrade systems to fit and adjust thanks to its patented screw-clamp technology. Dry glazed where no specialist tools are required. Glass can easily be removed and replaced if required.



SMALL AND COMPACT SYSTEM

The **SPIG-LITE**advanced balustrade system can be packed into boxes making it simple and cost-effective to store and despatch. On large installations, this can save a great deal of time and money!



UP TO 0.74KN LOADING TO BSI STANDARDS

Accredited and approved by multiple organisations to verify that it meets national and international building regulations for use as edge protection, where 0.74kN force loading is required.



HARD WEARING

SPIG-LITEadvanced has been precision engineered to provide incredible strength, for a lightweight and compact balustrade system. For additional protection from the elements, **SPIG-LITE**advanced spigots are anodised to 25 microns.



SUITABLE FOR A RANGE OF GLASS TYPES

SPIG-LITEadvanced can be used with a range of glass types from 12mm toughened to 21.5mm PVB glass. It is the different glass types that allow **SPIG-LITE**advanced to resist varying line loads, up to 0.74kN.



HIGHLY ADJUSTABLE

SPIG-LITEadvanced benefits from two sided screw-clamp technology that provides a 2° adjustment angle on either side of the glass. Enabling the perfect alignment of each glass panel, even when being installed onto an uneven surface.

01 SPIG-LITEadvanced

APPLICATIONS



EXTERIOR BALUSTRADE

- ✓ Balcony balustrade
- ✓ Terrace windbreak
- ✓ Garden screening



SWIMMING POOL FENCING

- ✓ Pool safety barrier
- ✓ Glass walkway
- ✓ Splash barrier



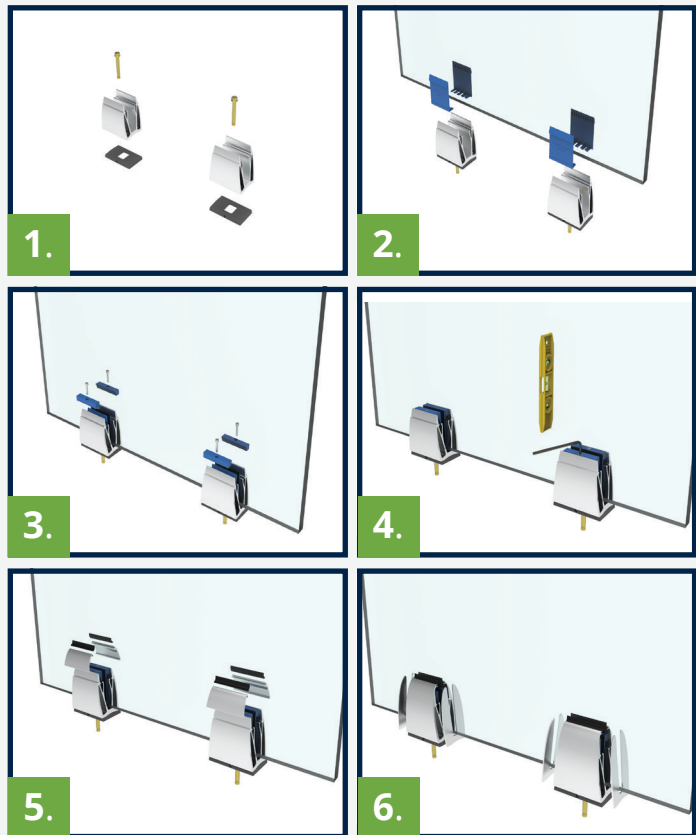
INTERIOR BALUSTRADE

- ✓ Mezzanines
- ✓ Staircases
- ✓ Glass partitions

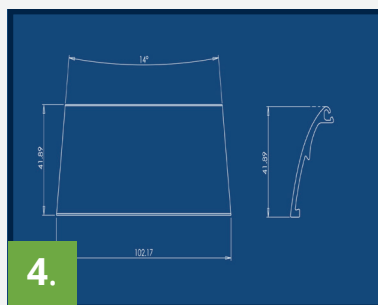
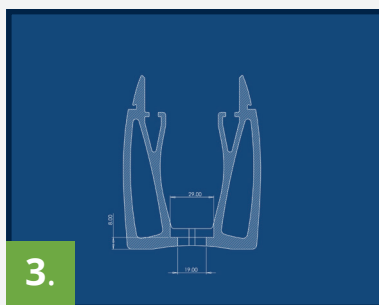
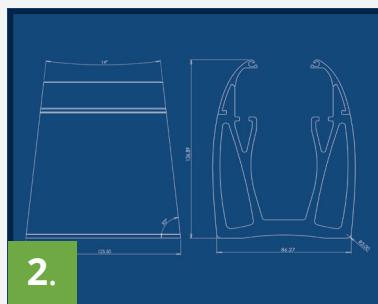
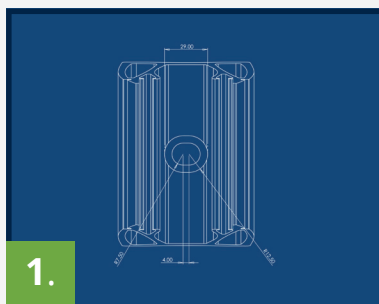
01 SPIG-LITEadvanced INSTALLATION GUIDE

SPIG-LITEadvanced is so simple to install and adjust thanks to its patented screw-clamp technology. These step by step instructions guide you through the installation process.

1. INSTALL THE SPIGOTS
2. MAKE CLAMPS AND ATTACH TO GLASS
3. FIT THE ADJUSTMENT MECHANISM
4. POSITION THE GLASS
5. ATTACH THE TOP CLIPS
6. FIT THE END CAPS



01 SPIG-LITEadvanced TECHNICAL DRAWINGS



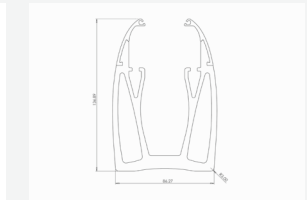
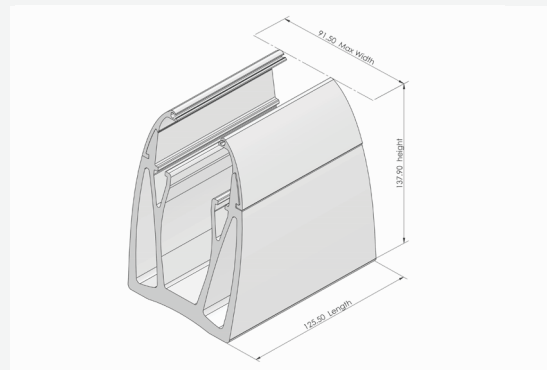
1. SPIG-LITEadvanced aerial view of spigot and bolt hole
2. SPIG-LITEadvanced spigot and top bead profile dimensions
3. SPIG-LITEadvanced spigot only profile dimensions
4. SPIG-LITEadvanced Top bead dimensions

SPIG-LITEadvanced

SPIG-LITEadvanced is our latest innovation to the Spigot system. Looking at where we could improve the system and making it easier to install, there is now a torque setting giving you confidence the product is fitted correctly.

This version of our Spigot now also has the option of an end cap to hide the internals of the system.

The **SPIG-LITEadvanced** is available in anodised graphite grey or raw aluminium, which will need to be powder coated or treated to prevent corrosion.

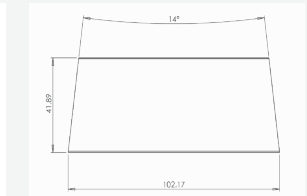
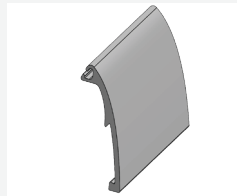


SPIG-LITEadvanced Spigot

Colour	Glass Thickness	Anodise thickness	Product Code
Graphite / Raw	12mm – 21.5mm	25µ	SPLA-001 / SPLA-001R

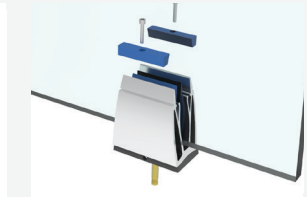
SPIG-LITEadvanced Top Bead

Colour	Glass Thickness	Anodise thickness	Product Code
Graphite / Raw	12mm – 21.5mm	25µ	SPLA-002 / SPLA-002R



SPIG-LITEadvanced Clamp Kit (incl. gasket)

Glass Thickness	Line Load Achieved	Product Code
12mm	0.36kN	SPLAB-0012
15mm	0.74kN	SPLAB-0015
17.5mm	0.74kN	SPLAB-0017
21.5mm	0.74kN	SPLAB-0021

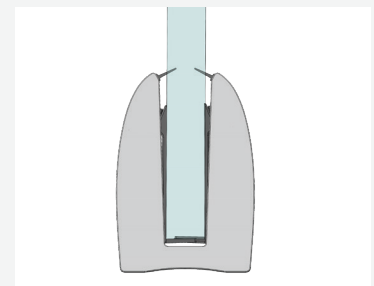


Spare Gasket

Glass Thickness	Product Code
15mm	SPLAG-001
12-15mm, 17.5mm, 21.5mm	SPLAG-002

End Cap

Material	Product Code
Aluminium	SPLA-060
Raw	SPLA-060R



BalconySeal™ - Water Sealing Drain Block Kit

Parts included	Product Code
1-6 Drain blocks, 1 Tube Sealant	SPLTA-DRAIN



02 POSIglaze

INTRODUCTION



POSIglaze is one of the most technically advanced aluminum balustrade systems on the market today.

Easily identified by its characteristic triangular-hollowed core, which provides an incredible strength to weight ratio. **POSIglaze** is able to achieve up to 1.50kN line load resistance when used with glass panels up to 1350mm high, making it a highly adaptable balustrade system suitable for use as edge protection in both domestic and commercial installations.

POSIglaze was the first fully adjustable system to enter the balustrade marketplace. The system benefits from patented screw-clamp technology, whereby two screws either side of the glass clamp are adjusted to enable up to a 2° tilt in the glass.



This means that when fitting the channel to an uneven surface, the angle of the channel can be countered by the adjustment of the glass.

02 POSIglaze

KEY BENEFITS



FAST AND EASY TO INSTALL AND ADJUST

One of the most simple balustrade systems to fit and adjust thanks to its patented screw-clamp technology. Dry glazed where no specialist tools are required.



ACCREDITED TO 1.50kN TO BS 6180:2011

POSIglaze is accredited and approved by multiple organisations to verify that it meets national and international building regulations for use as edge protection, where up to 1.50kN force loading is required.



LIGHTWEIGHT AND STRONG

Precision engineered using extruded aluminium with a geometrically hollowed out core; providing an incredible strength to weight ratio. For added protection from the elements POSIglaze is anodised to 25 microns.



APPROPRIATE FOR DOMESTIC AND COMMERCIAL

With 0.36kN to 1.50kN force loading capability, POSIglaze is a domestic to light commercial crossover product, making it an appropriate choice for a wide range of installations.



CAN BE USED WITH A WIDE RANGE OF GLASS TYPES

POSIglaze is a highly versatile product which can be used with glass thicknesses ranging from 12mm - 21.5mm, using either toughened glass, toughened laminate glass or SentryGlas.



SUITABLE FOR USE ON UNEVEN SURFACES

POSIglaze benefits from two-sided screw-clamp technology that provides a 2° adjustment angle on either side of the glass, enabling perfect alignment of each glass panel.

02 POSIglaze

APPLICATIONS



INTERNAL APPLICATION

- ✓ Handrail
- ✓ Staircase
- ✓ Mezzanine



EXTERNAL APPLICATION

- ✓ Decking
- ✓ Balcony
- ✓ Windbreak



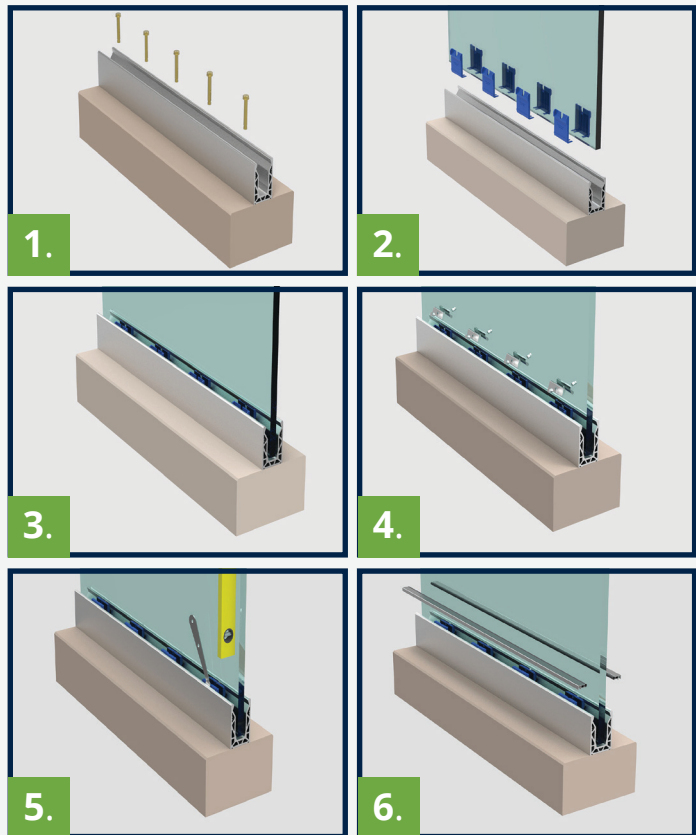
LIGHT COMMERCIAL APPLICATION

- ✓ Restaurant
- ✓ Bar
- ✓ Hotel

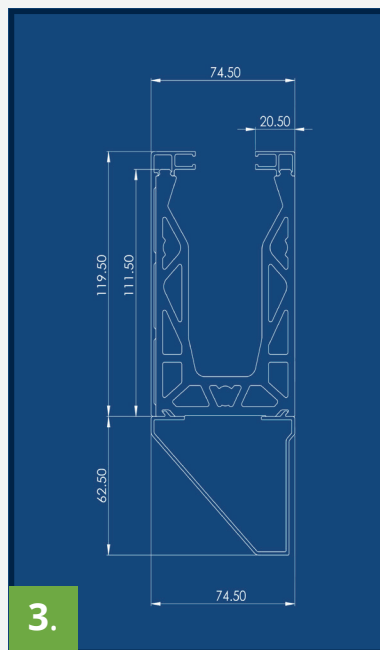
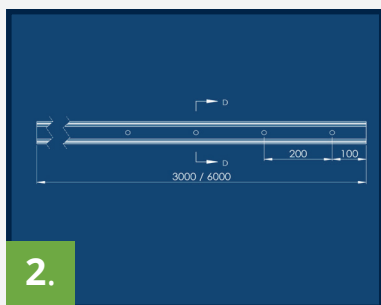
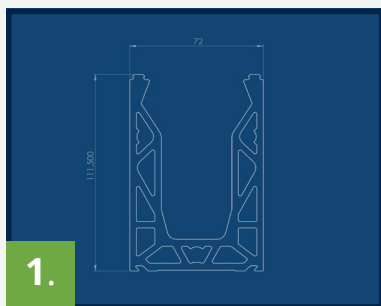
02 POSIglaze INSTALLATION GUIDE

POSIglaze is simple to install and adjust thanks to its patented screw-clamp technology. These step by step instructions guide you through the installation process.

1. FIT THE CHANNEL
2. CLAMP THE GLASS
3. PLACE THE GLASS IN THE CHANNEL
4. FIT THE BOLTS
5. ADJUST THE GLASS
6. ADD THE TOP BEAD



02 POSIglaze TECHNICAL DRAWINGS

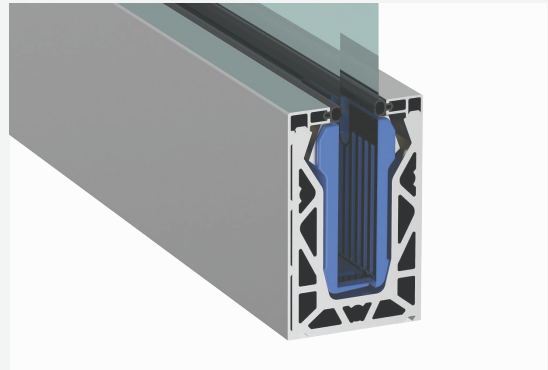


1. POSIglaze base mounted channel dimensions
2. POSIglaze bolt hole centres
3. POSIglaze side mounted channel dimensions, with aluminium top bead, side and base cladding

POSIglaze

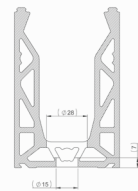
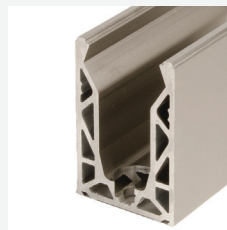
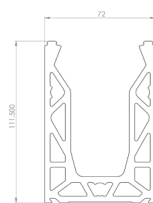
POSIglaze is our proven adjustable glass balustrade system. A preferred system amongst installers thanks to the ease of adjustment and the channels large adjustment capabilities.

The glass is able to pivot up to 2° each way from the vertical of the base shoe, allowing for 20mm at the top of the glass at 1000mm high or a total of 40mm from one extreme to the other.



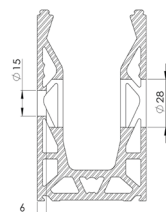
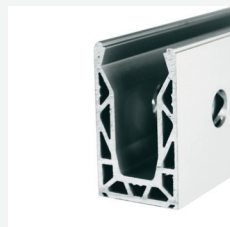
Base Drilled Channel

Colour/Type	Grade + Anodise Thickness	Length	Product Code
*Raw/Untreated	6063 N/A	3000mm	PGC-010R
*Raw/Untreated	6063 N/A	6000mm	PGC-016R
*Clear Anodised	6063 25μ	3000mm	PGC-010C
*Clear Anodised	6063 25μ	6000mm	PGC-016C
Silver Brushed	6063 25μ	1500mm	PGC-010S
Silver Brushed	6063 25μ	3000mm	PGC-010
Silver Brushed	6063 25μ	6000mm	PGC-016
Black Brushed	6063 25μ	1500mm	PGC-0105BK
Black Brushed	6063 25μ	3000mm	PGC-010BK
Black Brushed	6063 25μ	6000mm	PGC-016BK



Side Drilled Channel

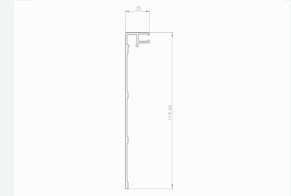
Colour/Type	Anodise Thickness	Length	Product Code
Clear Anodised	6063 25μ	1500mm	PGC-0205
Clear Anodised	6063 25μ	3000mm	PGC-020
Clear Anodised	6063 25μ	6000mm	PGC-026



*Special order only. Please contact us for minimum order quantity and lead-time.

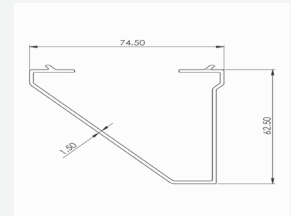
Side Cladding

Colour/Type	Anodise Thickness	Length	Product Code
*Raw/Untreated	6063 N/A	3000mm	PGA-010R
*Raw/Untreated	6063 N/A	6100mm	PGA-0161R
Silver Brushed	6063 25μ	3000mm	PGA-010
Silver Brushed	6063 25μ	6000mm	PGA-016
Black Brushed	6063 25μ	3000mm	PGA-010BK



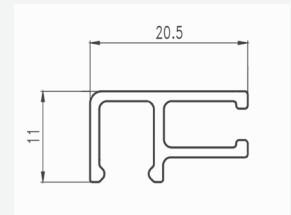
Bottom Cladding

Colour/Type	Anodise Thickness	Length	Product Code
Silver Brushed	6063 25μ	3000mm	PGA-020
Silver Brushed	6063 25μ	6000mm	PGA-026
Black Brushed	6063 25μ	3000mm	PGA-020BK



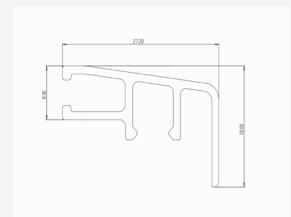
Top Bead

Colour/Type	Anodise Thickness	Length	Product Code
*Raw/Untreated	6063 N/A	3000mm	PGA-030R
*Raw/Untreated	6063 N/A	6000mm	PGA-036R
Silver Brushed	6063 25μ	1500mm	PGA-0305
Silver Brushed	6063 25μ	3000mm	PGA-030
Silver Brushed	6063 25μ	6000mm	PGA-036
Black Brushed	6063 25μ	3000mm	PGA-030BK



Top Bead - Cladding Insert

Colour/Type	Anodise Thickness	Length	Product Code
*Raw/Untreated	6063 N/A	3000mm	PGA-010-HO-RAW
Silver Brushed	6063 25μ	3000mm	PGA-030-HO



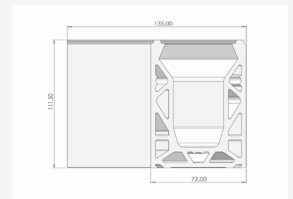
*Special order only. Please contact us for minimum order quantity and lead-time.

Clamp Kit (Incl. Gasket)

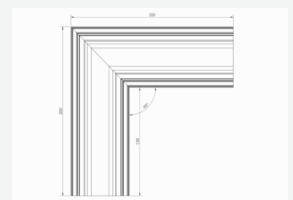
Glass Thickness	Line Load Achieved	Suits Length	Product Code
12mm	0.36kN	3000mm	PGB-0012
13.5mm	0.36kN	3000mm	PGB-0013
15mm	0.74kN	3000mm	PGB-0015
17.5mm	0.74kN	3000mm	PGB-0017
19mm	1.50kN	3000mm	PGB-0019
21.5mm	0.74kN PVB 1.50kN SGP	3000mm	PGB-0021
21.5mm-1.5kN	1.50kN SG Side Mount	3000mm	PGB-0021-1.5kN
12mm	0.36kN	1000mm	PGA-0012
13.5mm	0.36kN	1000mm	PGA-0013
15mm	0.74kN	1000mm	PGA-0015
17.5mm	0.74kN	1000mm	PGA-0017
19mm	1.50kN	1000mm	PGA-0019
21.5mm	0.74kN PVB 1.50kN SGP	1000mm	PGA-0021

**Base Drilled Pre-Fabricated Corners**

Colour	Angle	Product Code
Silver Brushed	90 Degrees	PGA-090
Silver Brushed	135 Degrees	PGA-135
Black Brushed	90 Degrees	PGA-090BK

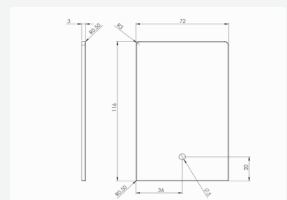
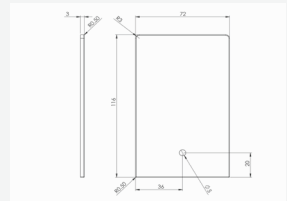
**Side Drilled Pre-Fabricated Corners**

Colour	Angle	Product Code
Clear Anodised	90 Degrees Internal	PGA-090SI
Clear Anodised	90 Degrees External	PGA-090SE



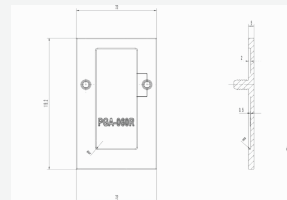
End Cap 316G S/S Laser Cut

Fitment	Colour	Product Code
Bead/Bead	Satin	PGA-060
Bead/Side Cladding	Satin	PGA-061
Side Cladding/Side Cladding	Satin	PGA-062
Bead/Side Cladding/Bottom Cladding Right handed	Satin	PGA-065R*
Bead/Side Cladding/Bottom Cladding Left handed	Satin	PGA-065L*
Bead/Bead Elongated for Stairs	Satin	PGA-066
Bead/Bead with Drainage Holes	Satin	PGA-060D
Bead/Bead	Black	PGA-060PBK
Bead/Bead with Drainage Holes	Black	PGA-060DPBK
* Viewed from outside of balcony		



End Cap 316G Cast W/Dowels

Fitment	Colour	Product Code
Bead/Bead	Satin	PGA-060R
Bead/Side Cladding Right Handed	Satin	PGA-061R
Bead/Side Cladding Left Handed	Satin	PGA-061L



Joining Dowels (2 req. per join)

Product Code
PGA-070



Angled Spanner

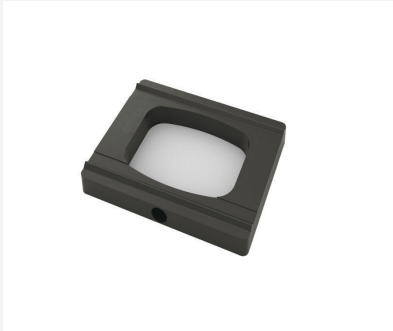
Product Code
PGA-050



Spare Gasket - 1000mm	
Glass Thickness	Product Code
12 – 17.5mm	PGA-001
19 – 21.5mm	PGA-002



Drainage Spacers		
Fitment	Fitted Size	Product Code
Base Drilled Channel	90 x 72 x 8mm	PGA-DRAINBLOCK
Side Drilled Channel	100 x 64 x 8mm	PVA-08DBSIDE
Drainblocks		PGA-DRAINBLOCK



BalconySeal™ - Water Sealing Drainblock Kit suits 3000mm	
Parts included	Product Code
15 Drain blocks, 2 Tubes Sealant	PGA-DRAINAGE
15x 1mm, 15x 2mm, 15x 3mm	PGA-DRSHIMKIT



03 R-LOCK

INTRODUCTION



R-LOCK is Pure Vista's one-side-fit glass balustrade system. Designed to provide the simplest possible adjustment, this system enables each glass panel to be perfectly aligned during installation.

The perfect choice for residential installations where access to one side of the balustrade during installation is challenging. Using a hybrid system R-LOCK is as easy to install as it is to uninstall. With the resin trapped within pods, they lift out with the glass and can be tapped off. The Edge profile allows the channel to be fitted flush to the edge of the balcony with the fixing centres kept at a safe distance.

R-LOCK can resist force loadings of up to 1.50kN and takes 21.5mm laminate glass. Subsequent versions of this product are in the testing phase and will provide a wider scope of



glass compatibility and a higher force loading capability. There is an accessory range for both R-LOCK as a whole and also specifically for R-LOCKedge74.

03 R-LOCK

KEY BENEFITS



FAST AND EASY TO INSTALL AND ADJUST

A simple wedge and wet-glazed balustrade system. Resin is used in a controlled way within a resin-pod system, for a clean installation. As easy to install as uninstall, with the use of a wedge-breaking tool.



HIGHLY ADJUSTABLE

R-LOCK benefits from a highly forgiving panel adjustment capability from the verticle; 10mm to the exterior edge and 23mm from the interior edge. This allows the glass panels to be perfectly aligned during installation.



ACCREDITED TO 1.5kN TO BS 6180:2011

R-LOCK is accredited and approved in line with BS 6180:2011 to verify that it meets national building regulations for use as edge protection, where 1.5kN force loading is achievable.



ONE-SIDE-FIT SYSTEM

One of the most adjustable one-side-fit balustrade systems to hit the marketplace. **R-LOCK** benefits from patented technology that enables both the installation and alignment of glass from the inside, saving time and money.



LIGHTWEIGHT AND STRONG

Precision engineered using extruded aluminium with a geometrically hollowed out core; providing incredible strength to weight ratio. For added protection against the elements, **R-LOCK** is anodised to 25 microns.

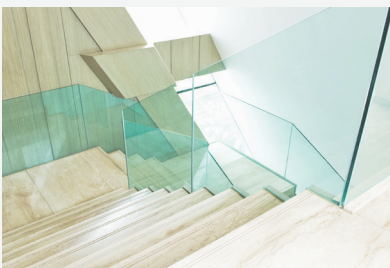


COMPLETELY FRAMELESS SYSTEM

R-LOCK is compatible with 15mm - 21.5mm PVB laminate glass. With this configuration of channel and glass, no posts or handrails are required, creating an aesthetically beautiful safety barrier.

03 R-LOCK

APPLICATIONS



INTERNAL APPLICATION

- ✓ Stairs
- ✓ Mezzanine
- ✓ Gallery



EXTERNAL APPLICATION

- ✓ Balcony
- ✓ Decking
- ✓ Walkway



LIGHT COMMERCIAL APPLICATION

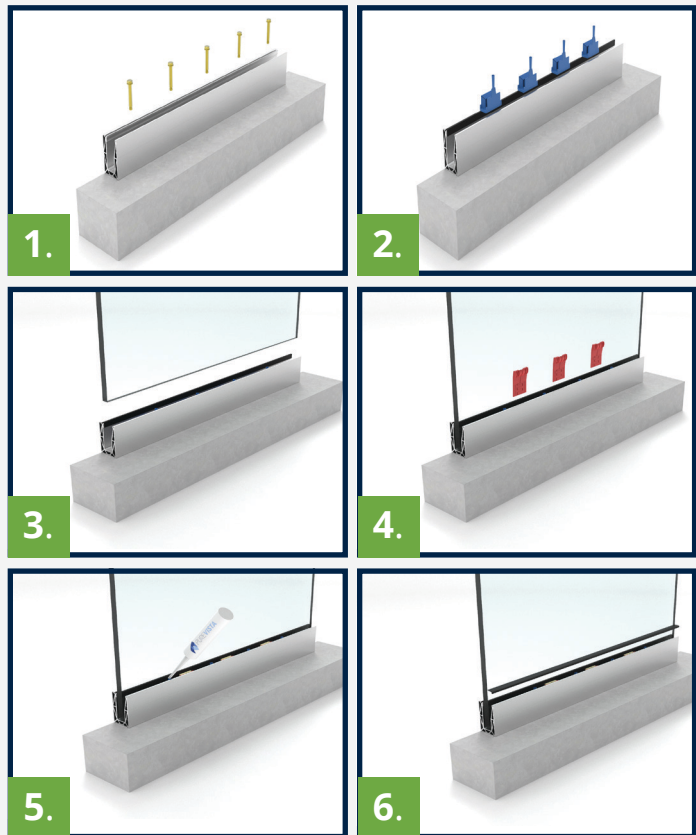
- ✓ Bar
- ✓ Restaurant
- ✓ Hotel

03 R-LOCK

INSTALLATION GUIDE

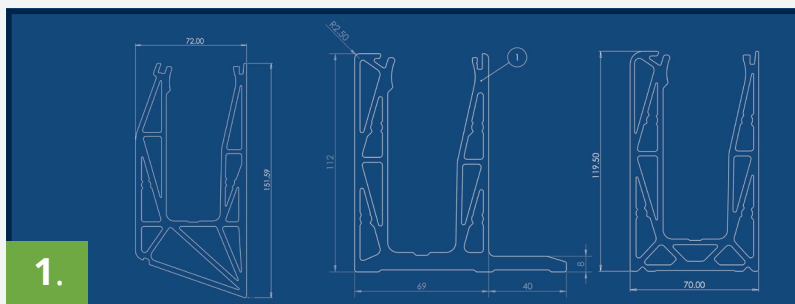
R-LOCK is simple to both install and uninstall. Resin is contained within pods, for a clean and accurate installation. These step by step instructions guide you through the installation

1. FIT THE CHANNEL
2. ASSEMBLE & FIT THE RESIN-PODS
3. LOWER IN THE GLASS
4. INSERT THE WEDGES
5. INJECT THE R-LOCK RESIN
6. ADD THE FLIPPER GASKET

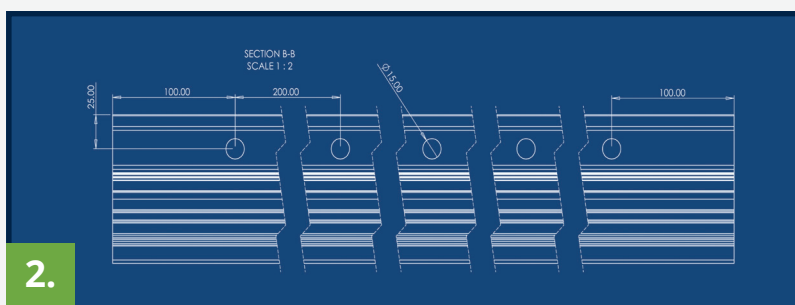


03 R-LOCK

TECHNICAL DRAWINGS

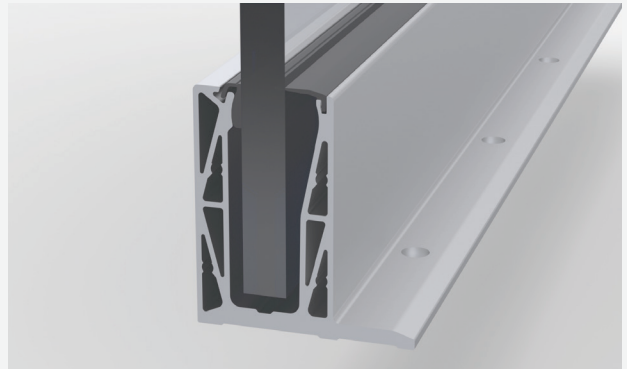


1. R-LOCK profiles and channel dimensions
2. R-LOCK bolt hole centres



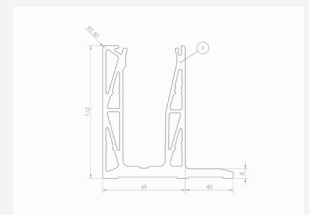
R-LOCK edge74

Designed to provide the simplest possible adjustment, this system enables each glass panel to be perfectly aligned during installation. The perfect choice for residential applications where access to one side of the balustrade during installation is challenging. Using a wedge and resin-pod system, **R-LOCK** is as easy to install as it is to uninstall and its Edge-profile allows it to be installed flush to the edge of your concrete or steel.



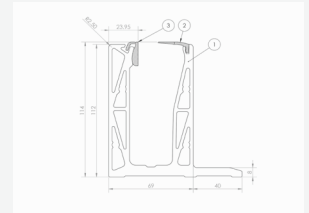
Base Drilled Edge Channel

Colour/Type	Anodise Thickness	Length	Product Code
Silver Brushed	6063 25μ	3000mm	RLE74-010



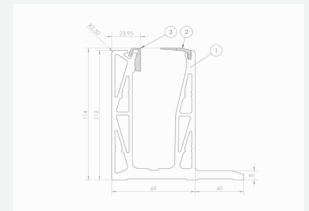
Outer Adjustment Bead

Colour	Material	Length	Product Code
Black	Plastic	3000mm	RLA-020



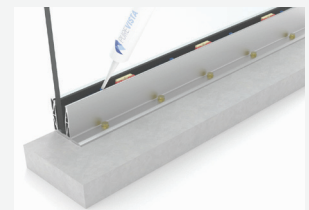
Internal Flipper Gasket

Colour	Material	Length	Product Code
Black	Plastic	3000mm	RLA74-030



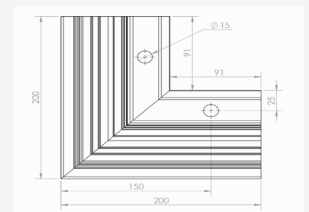
Resin Pod Kit - Includes Resin

Glass Thickness	Line Load Achieved	Length	Product Code
21.5mm	0.74kN	3000mm	RLB-0021



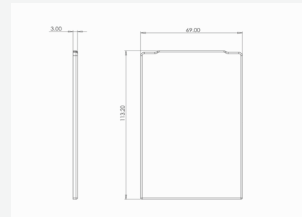
Pre-Fabricated Corners

Angle	Internal/External	Product Code
90 Degrees	External	RLA74-090
90 Degrees	Internal	RLA74-090I



End Cap 316G S/S Laser Cut

Fitment	Colour	Product Code
Bead/Bead	Satin	RLA74-060



Joining Dowels (2 req. per join)

Product Code
RLA-070



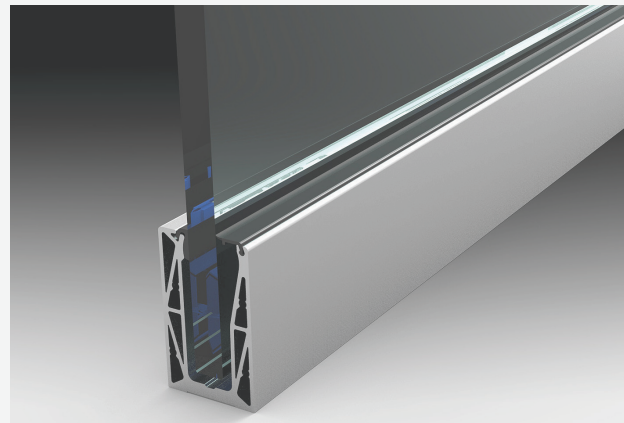
Wedge Removal Tool

Product Code
RLA-050



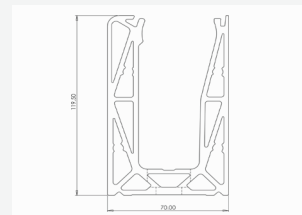
R-LOCK Base Mount

Designed to provide the simplest possible adjustment, this system enables each glass panel to be perfectly aligned during installation. The perfect choice for residential applications where access to one side of the balustrade during installation is challenging. Using a wedge and resin-pod system, R-LOCK is as easy to install as it is to uninstall. Suitable to use glass 12mm – 21.5mm as well as being used for light commercial projects.



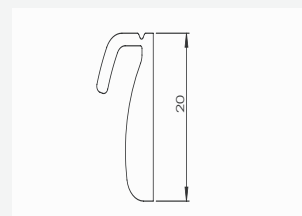
Base Drilled Edge Channel

Colour/Type	Anodise Thickness	Length	Product Code
Silver Brushed	6063 25µ	3000mm	RLC-010
Silver Brushed	6063 25µ	6000mm	RLC-016



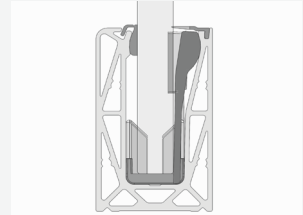
Adjustment Bead

Colour / Material	Glass Thickness	Length	Product Code
Black Plastic	12mm, 13.5mm, 15mm	3000mm	RLA-022
Black Plastic	17.5mm	3000mm	RLA-021
Black Plastic	21.5mm	3000mm	RLA-020



Internal Flipper Gasket

Colour	Material	Length	Size	Product Code
Black	Rubber	3000mm	12-15mm	RLA-001
Black	Rubber	3000mm	17.5-19mm	RLA-002
Black	Rubber	3000mm	21.5mm	RLA-003



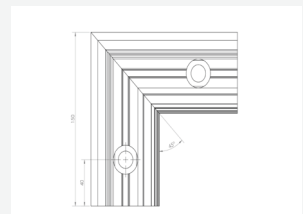
Resin Pod Kit - Includes Resin

Glass Thickness	Line Load Achieved	Suits Length	Product Code
12mm	0.36kN	3000mm	RLB-0012
13.5mm	0.36kN	3000mm	RLB-0013
15mm	0.74kN	3000mm	RLB-0015
17.5mm	0.74kN	3000mm	RLB-0017
21.5mm	1.50kN	3000mm	RLB-0021



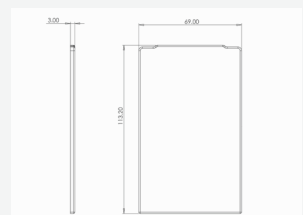
Pre-Fabricated Corners

Angle	Internal/External	Product Code
90 Degrees	Internal	RLA-090INT
90 Degrees	External	RLA-090EXT



End Cap 316G S/S Laser Cut

Fitment	Colour	Product Code
Bead/Bead	Satin	RLA-060L
Bead/Bead	Satin	RLA-060R



Joining Dowels (2 req. per join)

Product Code
RLA-070



Wedge Breaker Tool

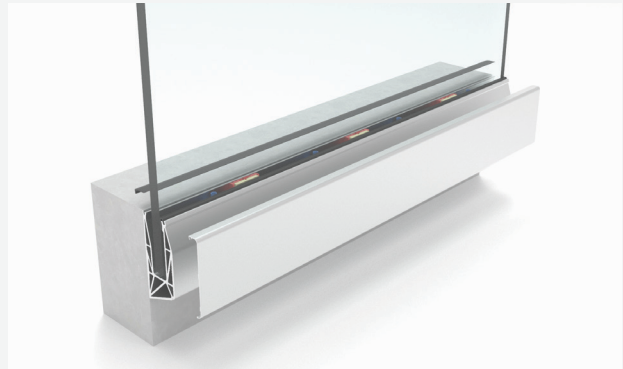
Product Code

RLA-050



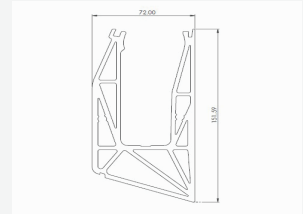
R-LOCK Side Mount

Designed to provide the simplest possible adjustment, this system enables each glass panel to be perfectly aligned during installation. Side-mount is suitable for larger fitment of glass between 12mm - 21.5mm. The perfect choice for light commercial applications where access to one side of the balustrade during installation is challenging. Using a wedge and resin-pod system, R-LOCK is as easy to install as it is to uninstall.



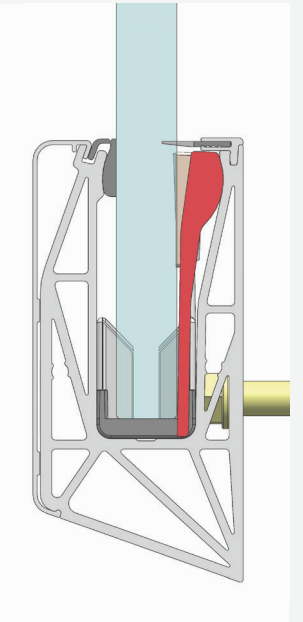
Side Drilled Channel

Colour/Type	Anodise Thickness	Length	Product Code
Silver Brushed	6063 25µ	3000mm	RLC-020
Side Cladding	6063 25µ	3000mm	RLA-010



Outer Adjustment Gasket

Colour/Material	Glass Thickness	Length	Product Code
Black Plastic	12mm, 13.5mm, 15mm	3000mm	RLA-022
Black Plastic	17.5mm	3000mm	RLA-021
Black Plastic	21.5mm	3000mm	RLA-020



Internal Flipper Gasket

Colour	Glass Thickness	Length	Product Code
Black	12mm, 13.5mm, 15mm	3000mm	RLA-030
Black	17.5mm	3000mm	RLA-031
Black	21.5mm	3000mm	RLA-032



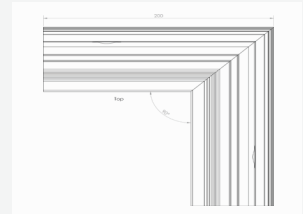
Resin Pod Kit - Includes Resin

Glass Thickness	Line Load Achieved	Suits Length	Product Code
12mm	0.36kN	3000mm	RLB-0012
13.5mm	0.36kN	3000mm	RLB-0013
15mm	0.74kN	3000mm	RLB-0015
17.5mm	0.74kN	3000mm	RLB-0017
21.5mm	1.50kN	3000mm	RLB-0021



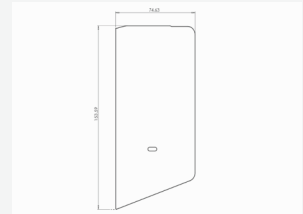
Pre-Fabricated Corners

Angle	Internal/External	Product Code
90 Degrees	Internal	RLSA-090I
90 Degrees	External	RLSA-090E



End Cap 316G S/S Laser Cut

Fitment	Colour	Product Code
Bead/ Cladding	Satin	RLSA-061L
Bead/ Cladding	Satin	RLSA-061R



Joining Dowels (2 req. per join)

Product Code
RLA-070



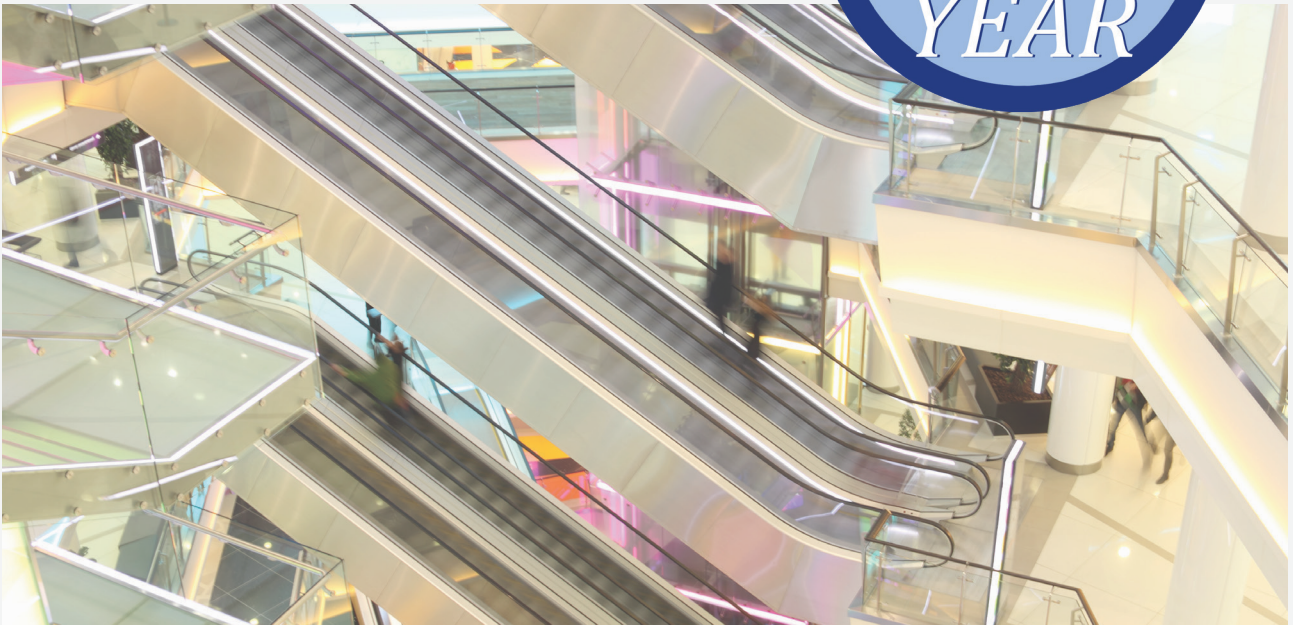
Wedge breaker Tool

Product Code

RLA-050



04 MEGAgrip INTRODUCTION



MEGAgrip is Pure Vista's answer to a heavy-duty and fully adjustable 3kN commercial balustrade system, designed as a highly-durable public safety barrier for large commercial constructs.

MEGAgrip uses a variation of our popular POSiglaze screw-clamp technology to secure the glass in place. The system uses a 13mm Hex nut and ¼ inch torque wrench and extension arm to tighten the bolts, for a quick and simple installation. Internal glass clamps allow for easy alignment of the glass within the channel, and are compatible with a wide range of glass thicknesses making **MEGAgrip** one of the most adaptable balustrade systems on the market today. It can easily be further fortified with a simple conversion kit, to become a bomb-resistant or bullet-proof balustrade system. **MEGAgrip** is ideal for use as a public space



barrier in busy locations such as transport hubs and venues, where there is a risk of overcrowding.

04 MEGAgrip

KEY BENEFITS



FAST AND EASY TO INSTALL AND ADJUST

One of the most simple balustrade systems to fit and adjust thanks to its patented screw-clamp technology. Dry glazed where no specialist tools are required. Glass can easily be removed and replaced if necessary.



LIGHTWEIGHT AND STRONG

Precision engineered using extruded aluminium with a geometrically hollowed out core, providing an incredible strength to weight ratio. For added protection, **MEGAgrip** is anodised to 25 microns.



ACCREDITED TO 3.00kN TO BS 6180:2011

MEGAgrip is accredited and approved by multiple organisations to verify that it meets national and international building regulations for use as edge protection, where up to 3.00kN force is required.



CAN BE USED WITH A WIDE RANGE OF GLASS TYPES

MEGAgrip is a highly versatile product which can be used with glass thicknesses ranging from 25mm - 33mm, using either toughened glass, toughened PVB laminate or SentryGlas.



ANTI-TERROR CONVERSION KITS

With 3.00kN force loading capability, **MEGAgrip** is a commercially appropriate product which can be fortified using conversion kits into bomb-resistant or bulletproof balustrade systems.

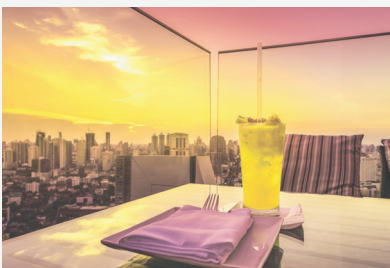


GLASS IS EASY TO REMOVE AND CHANGE POST USE

MEGAgrip is as easy to assemble as it is to disassemble, making it simple to install replacement glass panels following use as a bomb-resistant or bullet-proof barrier.

04 MEGAgrip

APPLICATIONS



TALL GLASS APPLICATION

- ✓ Privacy Screens
- ✓ Roof Terraces
- ✓ High Rise Balconies



LIGHT COMMERCIAL APPLICATION

- ✓ Music Venues
- ✓ Shopping Centres
- ✓ Office Buildings



STADIA APPLICATION

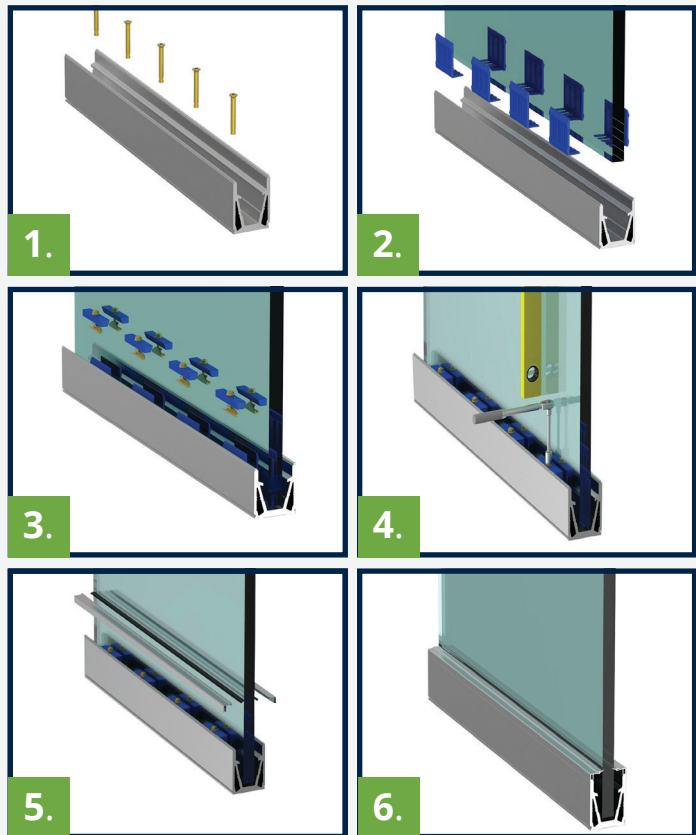
- ✓ Sports Stadiums
- ✓ Airports
- ✓ Railway Stations

04 MEGAgrip

INSTALLATION GUIDE

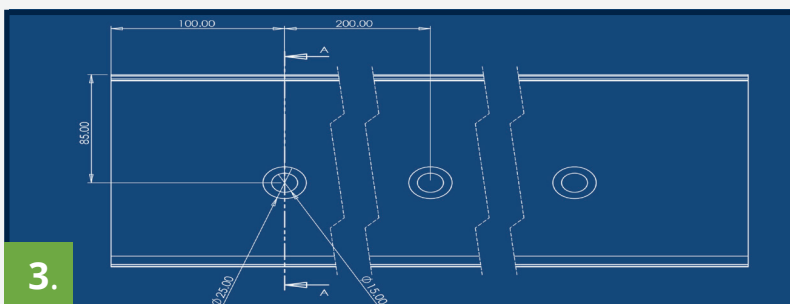
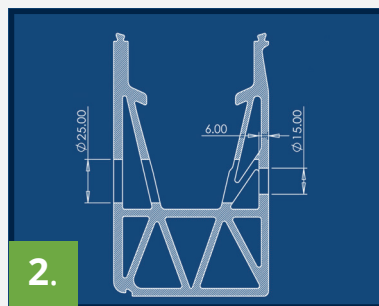
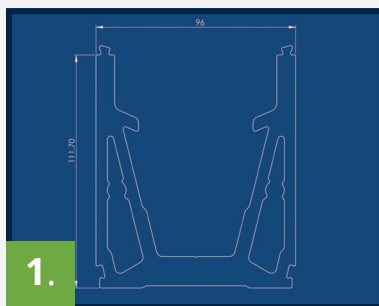
MEGAgrip is one of the most simple balustrade channel systems to install and adjust using screw-clamp technology. These step by step instructions guide you through the installation process.

1. FIT THE CHANNEL
2. ATTACH THE CLAMPS TO THE GLASS
3. ASSEMBLE AND INSERT THE MECHANISM
4. POSITION THE GLASS
5. ADD THE TOP BEAD
6. ADD END CAPS



04 MEGAgrip

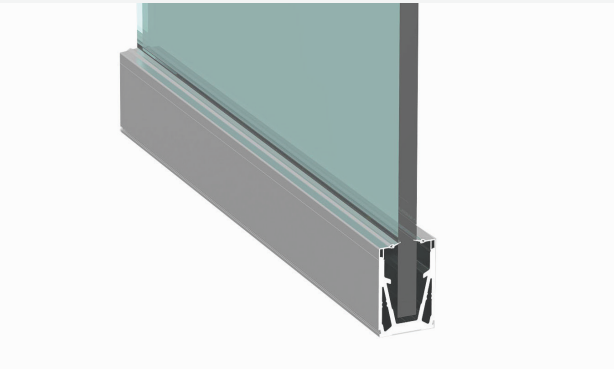
TECHNICAL DRAWINGS



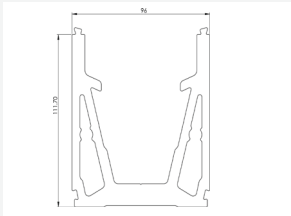
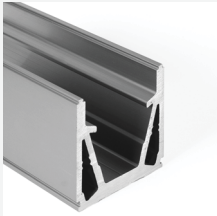
1. MEGAgrip base fix channel
2. MEGAgrip side fix channel with holes
3. MEGAgrip base fix bolt hole centres

MEGAGrip

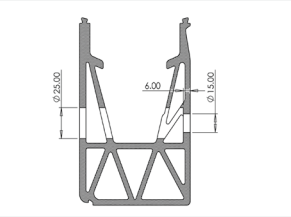
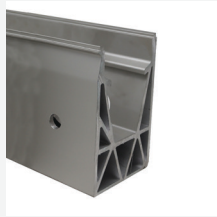
MEGAgrip uses a variation of our popular **POSi**glaze screw-clamp technology to secure the glass in place. The system uses a 13mm Hex nut and ¼ inch torque wrench and extension arm to tighten the bolts, for a quick and simple installation. Internal glass clamps allow for easy alignment of the glass within the channel, and are compatible with a wide range of glass thicknesses making **MEGA**grip one of the most adaptable balustrade systems.



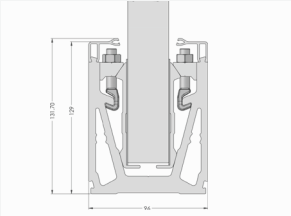
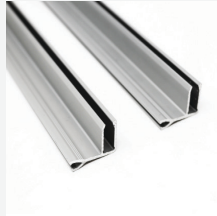
Base Drilled Channel				
Colour/Type	Anodise Thickness		Length	Product Code
Silver Brushed	6063	25µ	3000mm	MGC-010



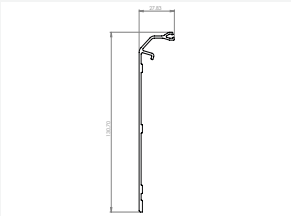
Side Drilled Channel				
Colour/Type	Anodise Thickness		Length	Product Code
Clear Anodised	6063	25µ	3000mm	MGC-020



Top Bead				
Colour/Type	Anodise Thickness		Length	Product Code
Silver Brushed	6063	25µ	3000mm	MGA-020



Side Cladding				
Colour/Type	Anodise Thickness		Length	Product Code
Silver Brushed Base-drilled	6063	25µ	3000mm	MGA-010
Silver Brushed Side-drilled	6063	25µ	3000mm	MGA-030



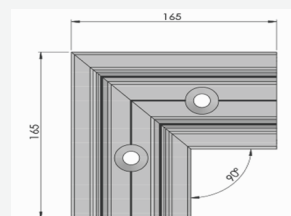
Clamp Kit (Incl. Gasket)

Glass Thickness	Line Load Achieved	Suits Length	Product Code
25mm Tough	3.00kN	3000mm	MGB-0025
25.5mm (12+12)	1.50kN PVB 3.00kN SG	3000mm	MGB-00255
31.5mm (15+15)	3.00kN	3000mm	MGB-0031
33mm (10+10+10)	3.00kN	3000mm	MGB-0033



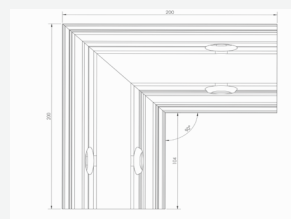
Base Drilled Pre-Fabricated Corners

Colour	Angle	Product Code
Silver Brushed	90 Degrees	MGA-090



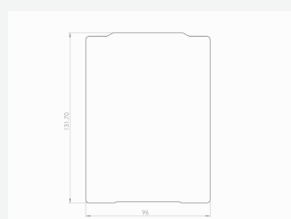
Side Drilled Pre-Fabricated Corners

Colour	Angle	Product Code
Silver Brushed Internal	90 Degrees	MGA-090SI
Silver Brushed External	90 Degrees	MGA-090SE



End Cap 316G S/S Laser Cut

Fitment	Colour	Product Code
Base Drilled Bead/Bead	Satin	MGA-060
Base Drilled Cladding/Cladding	Satin	MGA-061
Side Drilled Cladding/Bead Left	Satin	MGA-062L
Side Drilled Cladding/Bead Right	Satin	MGA-062R



Joining Dowels (2 req. per join)

Product Code

PGA-070



Spare Gasket

Glass Thickness

Product Code

25mm – 33mm

MGA-001



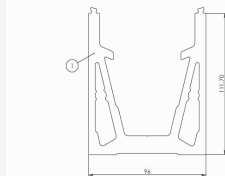
BULLETguard

Ideal for any location where there is a threat of gunfire and where up to 3kN frameless glass balustrade is required. **BULLETguard** combines the **MEGA**grip balustrade channel with the **BULLETguard** installation kit, meaning that any base drilled **MEGA**grip installation can be converted into a **BULLETguard** balustrade.



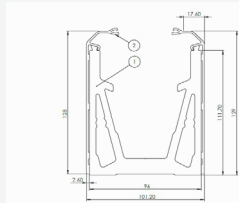
Base Drilled Edge Channel

Colour/Type	Anodise Thickness	Length	Product Code
Silver Brushed	6063 25µ	3000mm	MGC-010



Side Cladding

Colour/Type	Anodise Thickness	Length	Product Code
Silver Brushed	6063 25µ	3000mm	MGA-010



Clamp Kit (Incl. Gasket)

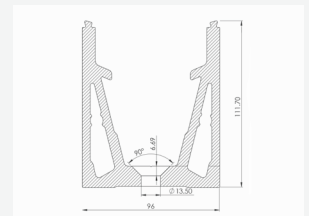
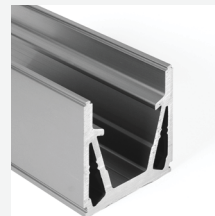
Glass Thickness	Line Load Achieved	Suits Length	Product Code
35.7mm	3.00kN	3000mm	MGB-0035B

BLASTguard

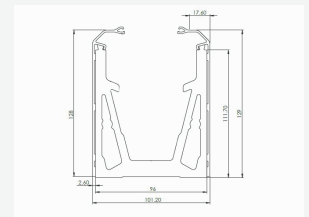
Ideal for any location where a bomb blast is a threat, where up to 3kN frameless glass balustrade is required. **BLASTguard** combines the **MEGA**grip balustrade channel with the **BLASTguard** installation kit, meaning that any **MEGA**grip installation can be converted into a **BLASTguard** balustrade.



Base Drilled Edge Channel				
Colour/Type	Anodise Thickness	Length	Product Code	
Silver Brushed	6063 25µ	3000mm	MGC-010BG	



Side Cladding				
Colour/Type	Anodise Thickness	Length	Product Code	
Silver Brushed	6063 25µ	3000mm	MGA-010	

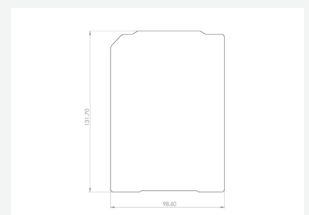


Blast Insert (Incl. Gasket)			
Glass Thickness	Line Load Achieved	Suits Length	Product Code
31.5mm PVB	3.00kN	3000mm	PVBG-0031

Joining Dowels (2 req. per join)
Product Code
PGA-070



End Cap 316G S/S Laser Cut		
Fitment	Colour	Product Code
Base Drilled Bead/Bead	Satin	MGA-061

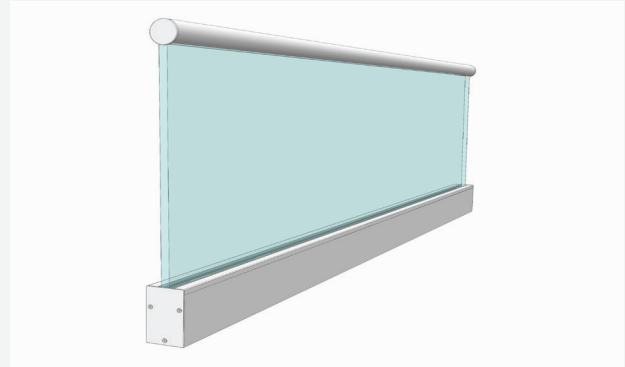


05 Accessories

AND OTHER PRODUCTS

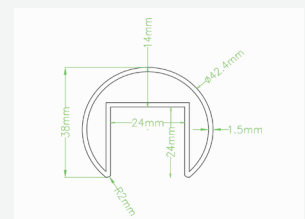
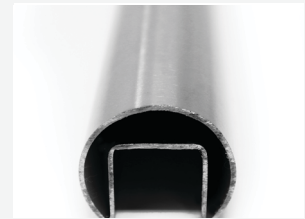
Handrail

Balustrade for the purpose of edge protection requires a backup safety feature. As Pure Vista specialise in frameless balustrade systems, we promote using laminated glass since this provides a second safety feature as required by building regulations (BS 6180:2011), and therefore no handrail is required. The alternative to laminate glass, is the use of a handrail with toughened glass.



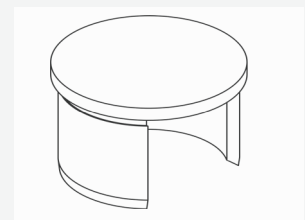
Slot Tube

Finish	Diameter	Grade	Length	Product Code
Satin	42.4mm	316 Stainless Steel	1500mm	HR42-001
Satin	42.4mm	316 Stainless Steel	3000mm	HR42-002
Satin	42.4mm	316 Stainless Steel	6000mm	HR42-003
Mirror Polish	42.4mm	316 Stainless Steel	1500mm	HR42M-001
Mirror Polish	42.4mm	316 Stainless Steel	3000mm	HR42M-002
Mirror Polish	42.4mm	316 Stainless Steel	6000mm	HR42M-003



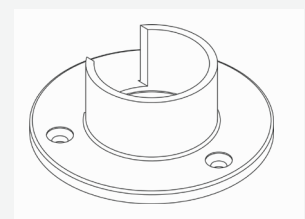
End Cap

Finish	Diameter	Grade	Product Code
Satin	42.4mm	316 Stainless Steel	HR42A-001
Mirror Polish	42.4mm	316 Stainless Steel	HR42MA-001



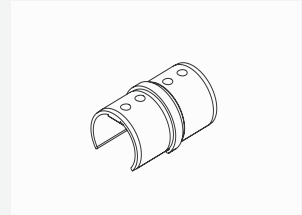
Wall Flange

Grade	Diameter	Grade	Product Code
Satin	42.4mm	316 Stainless Steel	HR42A-002
Mirror Polish	42.4mm	316 Stainless Steel	HR42MA-002



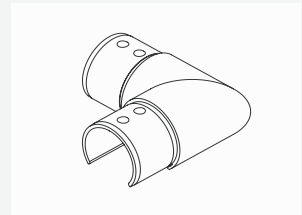
Straight Connector

Grade	Diameter	Finish	Product Code
316 Stainless Steel	42.4mm	Satin	HR42A-003
316 Stainless Steel	42.4mm	Mirror Polish	HR42MA-003



90° Horizontal Corner

Grade	Diameter	Finish	Product Code
316 Stainless Steel	42.4mm	Satin	HR42A-004
316 Stainless Steel	42.4mm	Mirror Polish	HR42MA-004



U-Gasket

Slot Tube Dia.	Glass Thickness	Length	Product Code
42.4mm	12mm	6000mm	HR42G-0012
42.4mm	15mm – 17.5mm	6000mm	HR42G-0015
42.4mm	19mm – 21.5mm	6000mm	HR42G-0019



Glass Hardware

Pure Vista are able to offer a range of glass hardware fittings. We stock products which give the ability for different finished glass balconies or clamps to further fortify the installation to meet the building regulations stipulated for your project such as a tall privacy screen.



Flat Back D-Clamps

Material	Finish	Glass Thickness	Product Code
316 Stainless Steel	Satin	12mm	PVA-D12
316 Stainless Steel	Satin	13.5mm – 15mm	PVA-D15
316 Stainless Steel	Satin	17.5mm – 21.5mm	PVA-D21

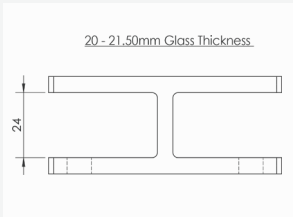


Glass Stiffeners

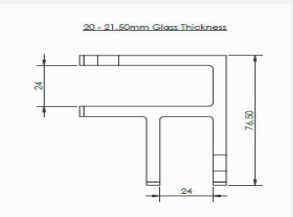
A glass stiffener helps to maintain glass alignment in an installation that is prone to experiencing high winds or other forces, which over time may shift the position of individual glass panels. Depending on the building regulations that apply to your project, glass stiffeners can serve as an unobtrusive alternative to handrail. These are produced out of duplex 2205 stainless steel providing even better corrosion resistance.



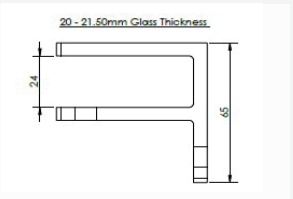
Straight connectors			
Material	Finish	Glass Thickness	Product Code
Duplex 2205	Satin	13.5-15mm	PVA-STIFF13.5
Duplex 2205	Satin	17.5mm	PVA-STIFF17
Duplex 2205	Satin	21.5mm	PVA-STIFF21



90° Angle			
Material	Finish	Glass Thickness	Product Code
Duplex 2205	Satin	13.5-15mm	PVA-STIFF9013.5
Duplex 2205	Satin	17.5mm	PVA-STIFF9017
Duplex 2205	Satin	21.5mm	PVA-STIFF9021



Wall Mounted			
Material	Finish	Glass Thickness	Product Code
316 Stainless	Satin	13.5-15mm	PVA-STIFFW13.5
316 Stainless	Satin	17.5-19mm	PVA-STIFFW17.5
316 Stainless	Satin	21.5mm	PVA-STIFFW21.5



Point Fixings

Point fixtures are a useful alternative to balustrade channel when the force loading requirements of the project allow and when a balustrade channel doesn't suit the installation.



Point Fixings				
Material	Standoff	Diameter	Threaded Rod	Product Code
316 Stainless	10mm (standard)	52mm	M10 X 150mm	PVA-POINT

Optional Standoff			
Material	Standoff	Diameter	Product Code
316 Stainless	20mm	52mm	PVA-POINT20
316 Stainless	30mm	52mm	PVA-POINT30
316 Stainless	40mm	52mm	PVA-POINT40
316 Stainless	50mm	52mm	PVA-POINT50



Drilling

Pure Vista is able to offer a selection of drilling accessories making everything available from one place. We supply high quality parts so the job can be done right first time. The concrete SDS drill bits are quad-tip to prevent drift if the drill hits aggregate.

Drill Bits		
Drill Type	Diameter	Product Code
Concrete	12mm	PVA-DBC12
Concrete	18mm	PVA-DBC18
Steel	14mm	PVA-DBS14



Concrete cleaning**Product Code**

Hole Blower	PVA-PUMP
Hole Cleaning Brush	PVA-BRUSH16

**Bolts**

We offer bolts in zinc plated or galvanised. We have tested the fixing we offer, and are happy with their performance.

Concrete Fixings**Concrete Screws**

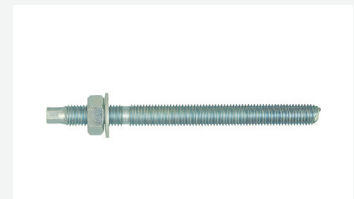
Bolt Diameter	Drill hole	Bolt Length	Product Code
14mm	12mm	110mm	PVA-CSCREW

**Expansion Anchors**

Bolt Diameter	Drill hole	Bolt Length	Product Code
M8/10	12mm	87mm	PVA-EXPBOLT

**Resin Anchor Rod**

Bolt Diameter	Drill hole	Bolt Length	Product Code
M12	14mm	160mm	PVA-RANCHOR

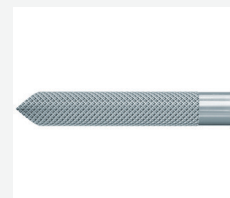
**Resin Mortar**

Type	Cartridge Size	Product Code
Vinylester	300ml	PVA-LOCKMORTAR
Styrene Based	300ml	PVA-REDMORTAR



Internal Threaded Rod System

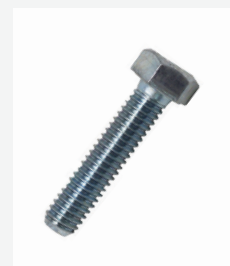
Threaded Sleeve				
Sleeve Diameter	Drill hole	Sleeve Length	Internal Thread	Product Code
18mm	20mm	125mm	M12 x 25mm	FISCHERRG18M12



Resin Capsule		
Type	Cartridge Size	Product Code
Epoxy	300ml	FISCHERRSB16



Steel Bolt					
Type	Head	Size	length	Strength	Product Code
Zinc Plated	Hex-Head	M12	30mm	10.9	PVA-BOLTM12X30
Zinc Plated	Counter-Sunk	M12	55mm	10.9	PVA-BOLTM12X55CS



Steel Fixing

Bolts					
Type	Head	Size	length	Strength	Product Code
Zinc Plated	Hex-Head	M12	55mm	10.9	PVA-BOLT



Thread locker		
Type	Cartridge Size	Product Code
Loctite 270	10ml	PVA-LOCTITE270
Loctite 638	50ml	PVA-LOCTITE638



Glass Cleaner	
Volume	Product Code
1 lt	PVA-GCLEAN



Stainless Steel Cleaner	
Volume	Product Code
500ml	PVA-SSCLEAN



Rotatable sealant nozzle		
Fitment	Length	Product Code
Small - Coarse	110mm	PVA-NOZZLE360



06 BALCONY SEAL® INTRODUCTION

Balcony Seal®

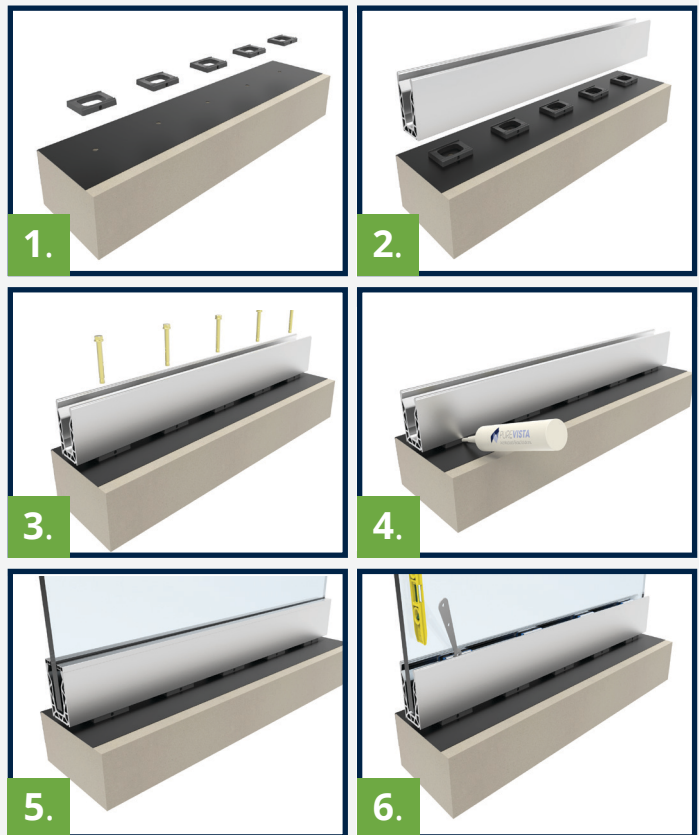
The Balcony Seal® drain block is made of plastic that is strong and will stand the test of time. The patented design works with Pure Vista products only. Specially created to defend your property from water damage when balustrade is installed. The Balcony Seal® system is designed to work with the POSiglaze channels, R-LOCK base and the SPIG-LITEadvanced.



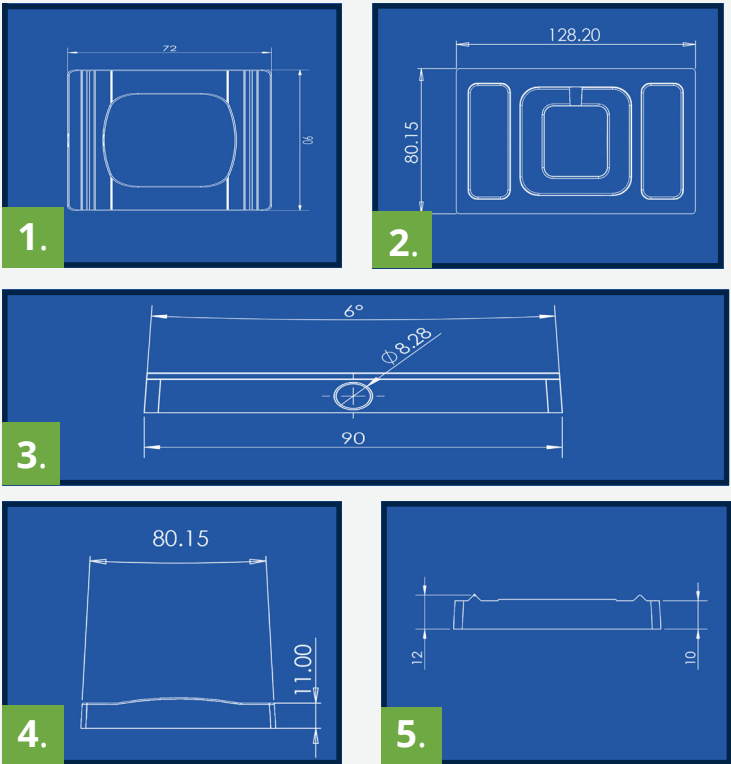
06 BALCONY SEAL® INSTALLATION GUIDE

These step by step instructions guide you through the POSiglaze installation process, using Balcony Seal®.

1. POSITION THE DRAINBLOCKS
2. ALIGN THE CHANNEL
3. FIT THE BOLTS
4. RESIN
5. FIT THE GLASS
6. ALIGN THE GLASS



06 BALCONY SEAL®
TECHNICAL DRAWINGS



- 1. POSiglaze Drain Block
aerial view
- 2. SPIG-LITEadvanced Drain
Block view from below
- 3. POSiglaze Drain Block side
view
- 4. SPIG-LITEadvanced Drain
Block depth
- 5. POSiglaze Drain Block
depth

Balcony Seal® Kits		
Balcony Seal® Product	Minimum order	Product Code
POSiglaze Kit	15	PGA-Drainage
R-LOCK Kit	15	PGA-Drainage
SPIG-LITEadvanced Kit	1	SPLTA-Drainage



Balcony Seal® extras		
Balcony Seal® Product	Minimum Order	Product Code
POSI/R-LOCK Drain Block	15	PV08DBSIDE
SPIG-LITEadvanced Drain Block	1	SPLTA-Drain
Resin	1	Zsika
360 Nozzle	1	PVA-NOZZLE360

