

**Compact Glass**  
SV-X110



# COMPACT GLASS



## SV-X110

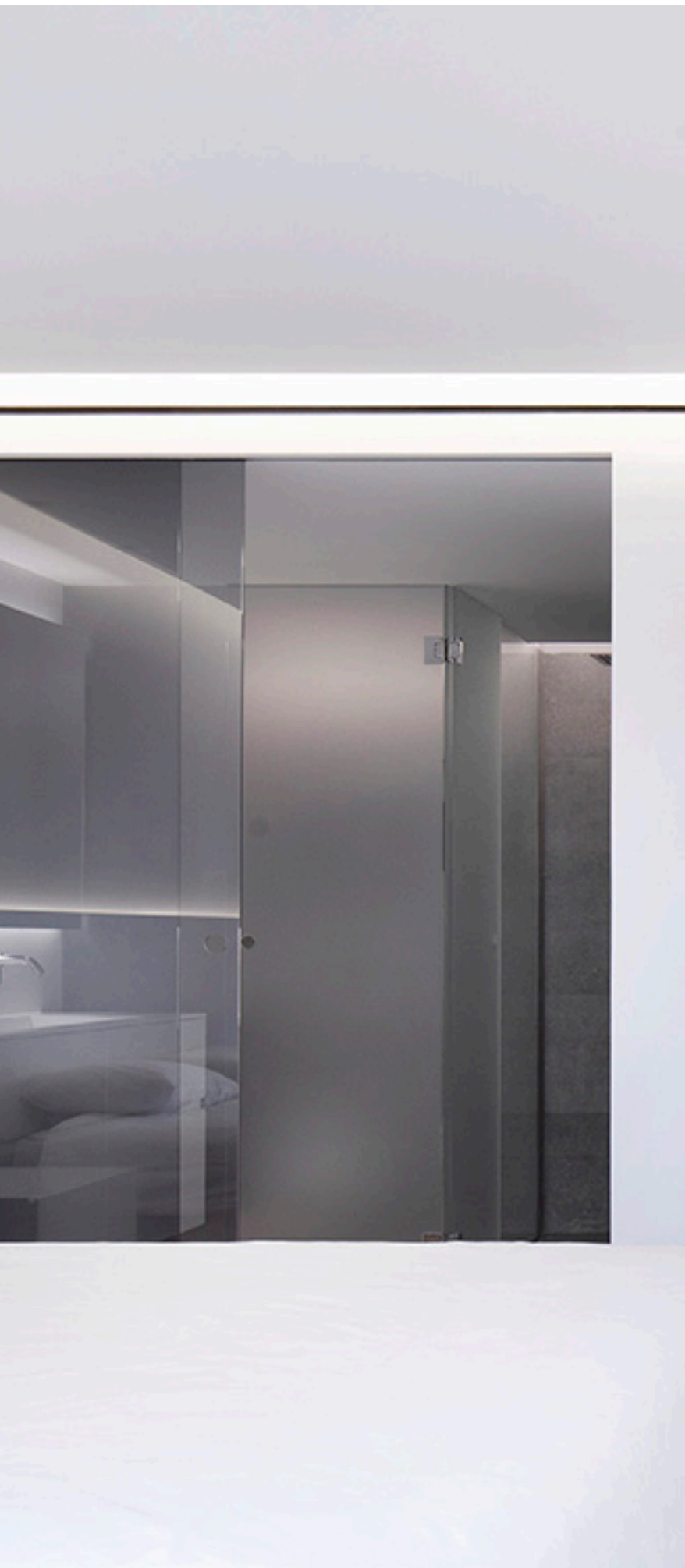
### Technical Details

SV-X110 is a compact sliding solution for frameless glass panels, combining latest technology with an attractive minimalist design. The system is quick and easy to install, and is particularly appropriate for domestic and commercial applications, where it integrates seamlessly into any design.

There is a choice between different braking systems: retaining brake and our new Softop damping system, an exceptional solution for a smooth and quiet sliding action. Thanks to the latest developed damping technology, the opening effort is reduced by almost 40%, and a soft and silent closing is achieved in the final 7 cm of travel.

In this way, a pleasing aesthetic performance is combined with enhanced safety: fingers are protected from becoming trapped during closure, while the system itself and the glass panel are protected from impact damage, effectively extending the product's useful life. Minimum door width required also reduced down to 814 mm.

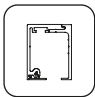




**SV-X110**  
Technical characteristics

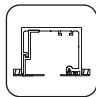
Profiles

TRACK 1



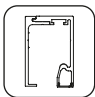
59x60 mm

TRACK 2



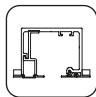
76x61 mm

TRACK 3




59x70 mm

TRACK 4

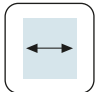


76x61 mm


Specifications




10-12-14 mm




**SofTop**  
MIN.814mm



**SofTop**  
MÁX. 110Kg



BALL BEARING



KIT AVAILABLE

Weight

110 kg

242 lb

Certificated  
product



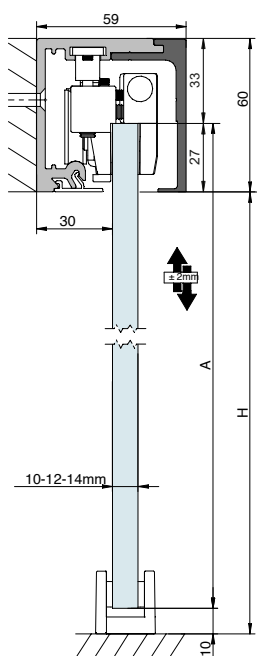
Download  
certificate



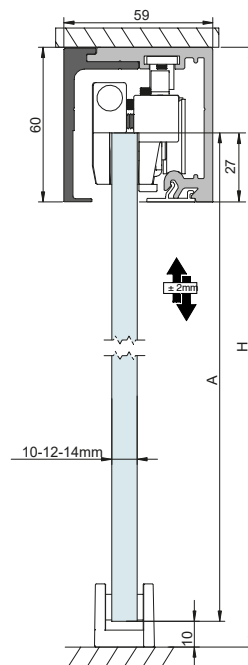
## SV-X110

### Cross-section

#### TRACK 1 Wall / Ceiling mount

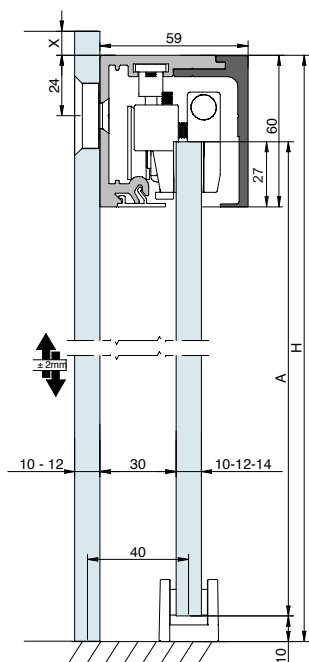


$$A = H + 17$$



$$A = H - 43$$

#### TRACK 1 Glass wall mount



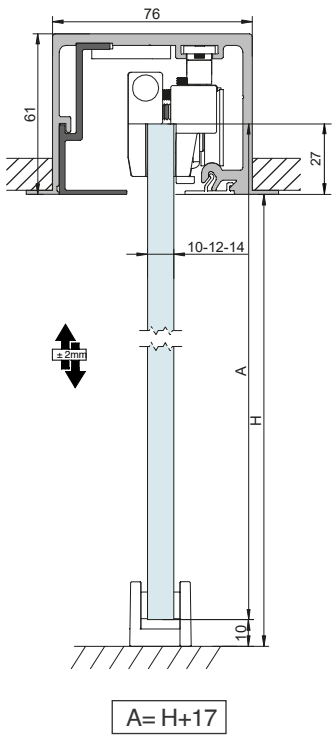
$$A = H - 43$$

$$G = H + X$$

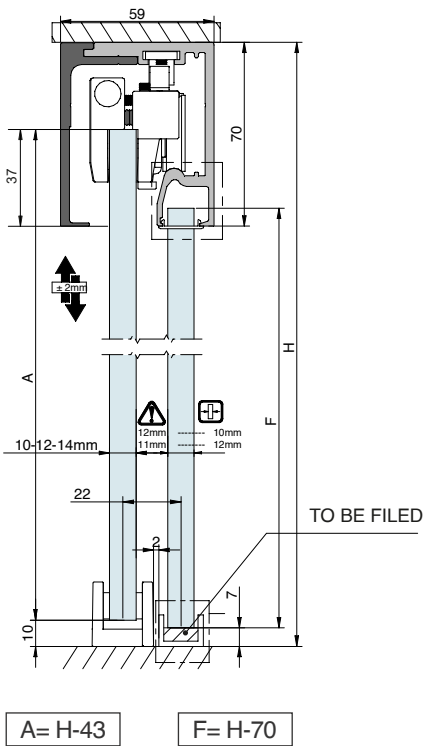
SV-X110

Cross-section

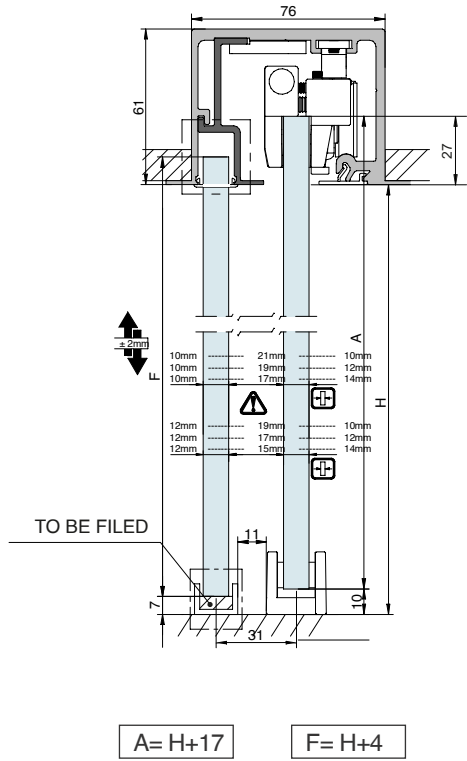
TRACK 2 False ceiling mount



TRACK 3 Wall / Ceiling mount with fixed panel

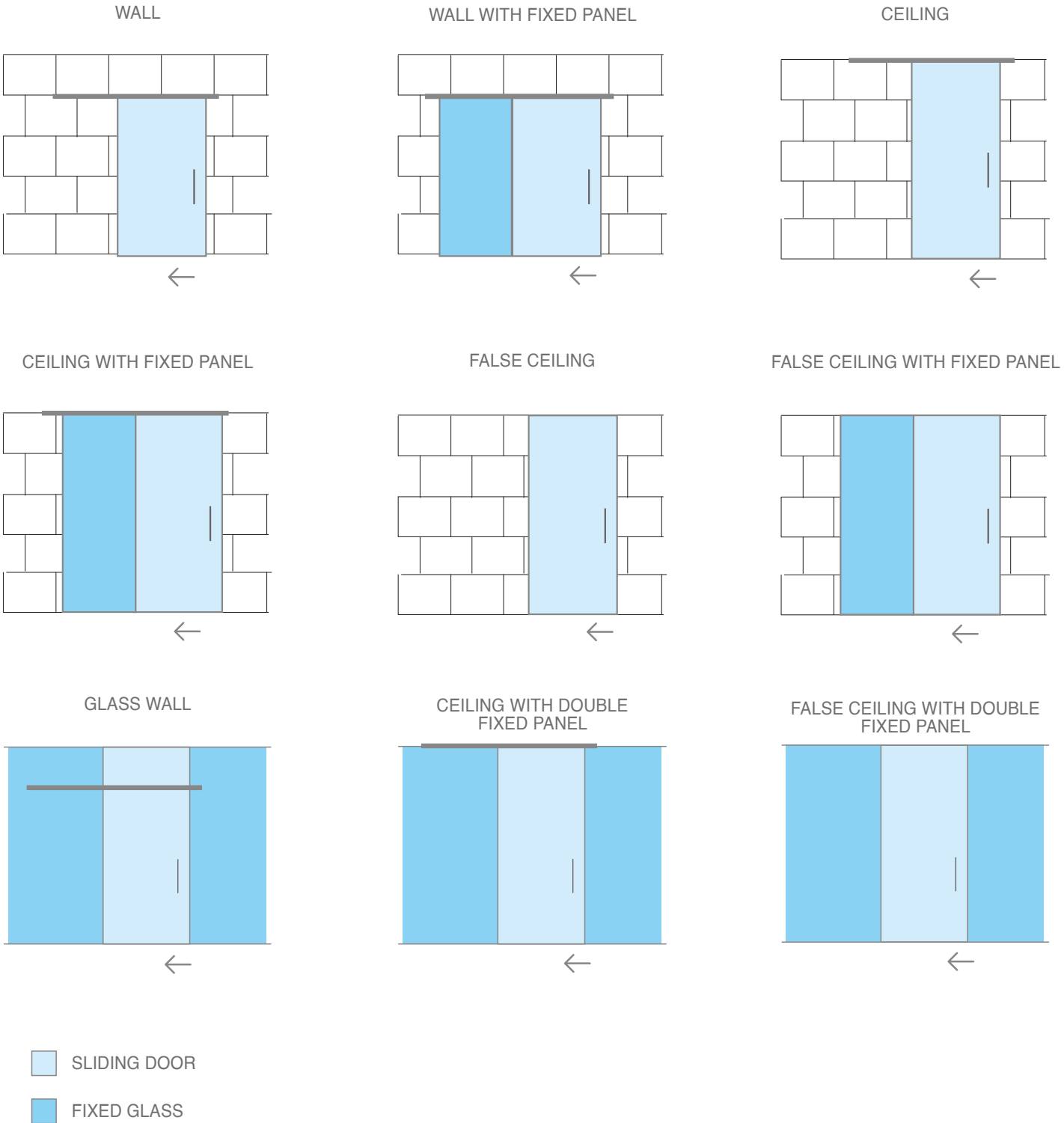


TRACK 4 False ceiling mount with fixed panel



SV-X110

Installation possibilities

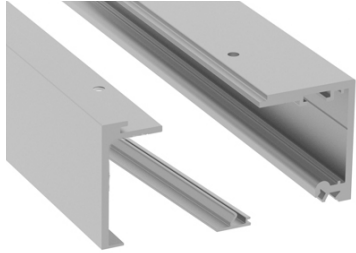




## SV-X110

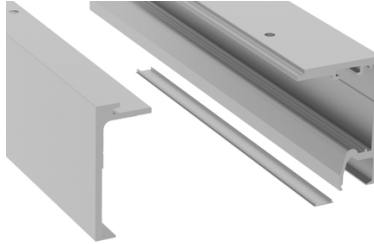
### Components

#### TRACK OPTIONS



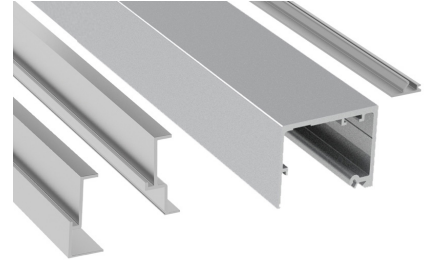
59x60mm

**SV-X110 - TRACK 1**  
Wall / Ceiling mount



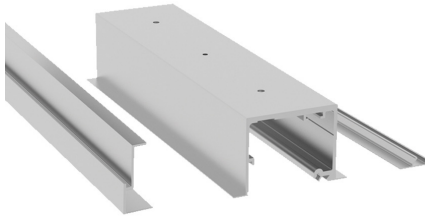
59x70mm

**SV-X110 - TRACK 3**  
Wall / Ceiling mount  
with fixed panel



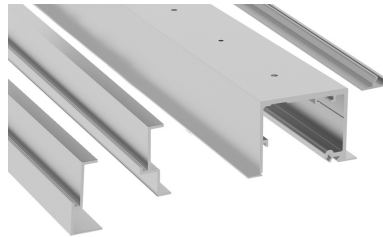
76x61mm

**SV-X110 - FRAME TRACK**  
Wall / Ceiling mount  
with/without fixed panel



76x61mm

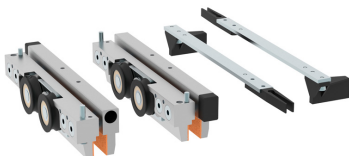
**SV-X110 - TRACK 2**  
False Ceiling mount  
without fixed panel



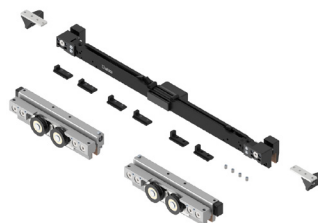
76x61mm

**SV-X110 - TRACK 4**  
False Ceiling mount  
with/without fixed panel

#### BRAKE OPTIONS



**SV-X110 - SET 1**  
x2 Retaining stopper  
(Standard Stoppers)



**SV-X110 - SET 10**  
x1 Softop doble

#### Available Finishes

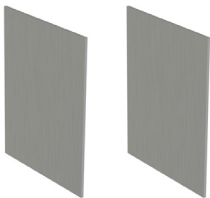
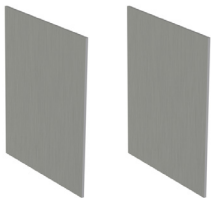

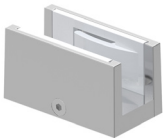
● SI | Satin anodized aluminium

● BL | Matt black lacquered aluminium

○ WL | Matt white lacquered aluminium

SV-X110

Components

ACCESSORIES		
 <p><b>SV-X110 - END CAPS TRACK 1</b> Wall / Ceiling mount</p>	 <p><b>SV-X110 - END CAPS TRACK 3</b> Wall / Ceiling mount with fixed panel</p>	 <p><b>SV-X-GF</b> Glass Fixing</p>
 <p><b>SV-X-FG</b> Floor Guide</p>		



## Notes

## Notes

## Notes

# Compact Glass

SV-X110 + Frame Accessory



Polígono Industrial de Foradada / 08580  
St. Quirze de Besora / Barcelona / Spain  
T +34 93 852 96 15  
export@saheco.com  
[saheco.com](http://saheco.com)



**Saheco's Exclusive Distributor**  
**Melbourne Office**  
170 Derrimut Drive Derrimut Vic 3030

Tel. 1300 4 ELITE  
sales@eliteglasssolutions.com.au  
[eliteglasssolutions.com.au](http://eliteglasssolutions.com.au)

**Adelaide Office**  
7 Manfull St. Melrose Park SA 5039