



BLOQ

g l a s s

SV-Q60 | SV-Q110

More than

a compact

sliding door

system.

Glass partitions
and interior doors.

BLOQ

g l a s s

BLOQ is a product range of systems for frameless sliding glass doors that stands out for its quality, design, innovative technology, easy installation, and a strong commitment to sustainability.

It is a product with exceptional design that is evident in every user experience and with a clear objective: to reduce dimensions and increase performance.

Key features:

- System for domestic and commercial applications, supporting weights up to **60kg** for the **SV-Q60** system and 110kg for the **SV-Q110**.
- **Compact profiles** that combines functionality, aesthetics, and space-saving qualities, offering a versatile and elegant solution for different spaces and needs.
- **3 unique profiles** (including fixed glass) for all installation variations and available weights.
- Profiles available in **various finishes** for maximum architectural adaptability.
- Installation options include wall mounting, wall-wall mounting, ceiling mounting, false ceiling mounting, and false ceiling with lintel, with or without fixed glass.
- Clamp **with new anti-derailment technology** (using ball-bearing) increased safety and traction capacity.
- **Ball-bearing rollers** for smooth and silent sliding.
- **Minimum door width of 600mm** (SV-Q60) or 680mm (SV-Q110) with double way soft close.
- **SofTop; double action (soft opening and closing)** in a single damping brake. Installable and removable anytime after installation.
- **All adjustments are frontal**, ensuring a remarkably straightforward installation process.
- **Adjustable:** the possibility to add or remove it after installation.
- **No glass machining** is required for any of the applications.
- **Applus+ certification** according to EN 1527 standard for the entire range. Durability grade of **200,000 test cycles** and Corrosion grade 4: 240 hours in a saline chamber. **With SofTop the** durability grade 6: 100,000 cycles and Corrosion grade 4: 240 hours in a saline chamber.
- We firmly believe in what we do, which is why we are extending the **warranty** from 5 to **10 years**.
- **New packaging:** more **sustainable** than ever.

DOWNLOAD LIBRARY



INSTALLATION VIDEO



is more...



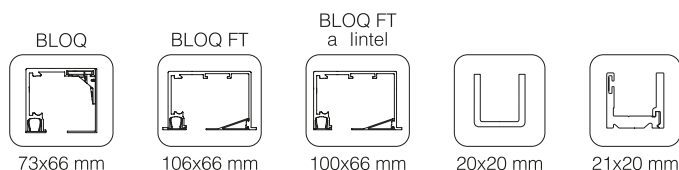


...

quality
design

technology
easy installation
sustainability

Profiles



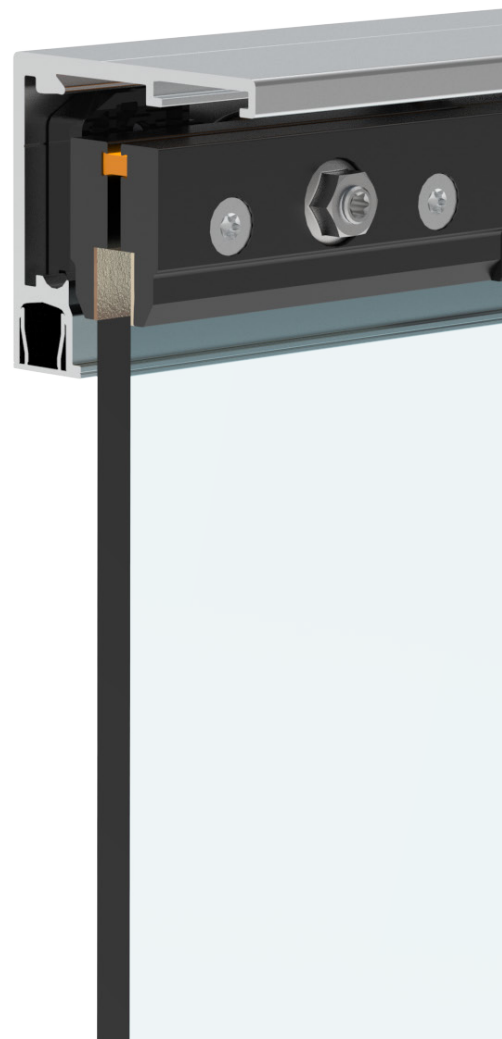
The profiles of the **BLOQ GLASS** range features outstanding design, created with the firm purpose of reducing dimensions in all its aspects and maximizing its performance.

Elegance, innovative technology, and ease of installation come together to make BLOQ profiles a *must* for compact systems.

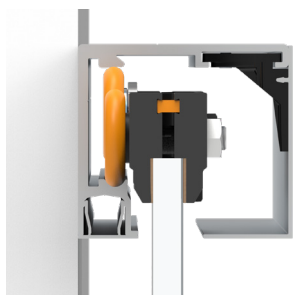
4

/Features

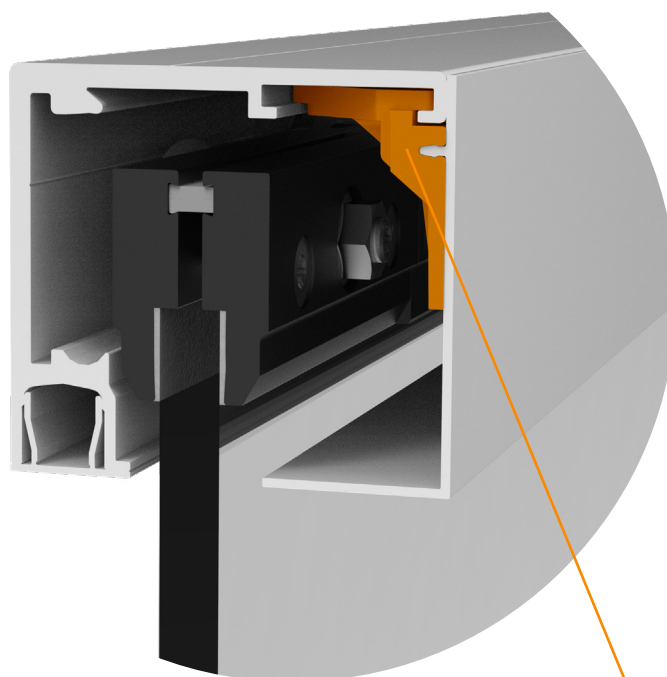
- Product range with **3 top tracks**: surface-mounted profile (wall and ceiling), false ceiling profile, and false ceiling with lintel profile. Each of them allows installation with **sliding and sliding + fixed glass** and is suitable for **60Kg and 110Kg**, making it perfect for **stock optimization**.
- **Reduced dimensions**: 73x66mm (surface-mounted profile).
- Compatible for both weights available: **SV-Q60** roller carriage up to **60kg** and **SV-Q110** up to **110kg**.
- Surface mounted track supplied **pre-drilled** for wall mount.
- Retaining brakes, SofTop Activator, and pelmet Cover Clip can be installed or removed anytime, **making no need of have registers along the track**.
- **Available finishes**: satin anodized aluminium, matte white lacquer aluminium, matte black lacquer aluminium, and for customer customization, a mill finish.



/Clip for
pelmet cover



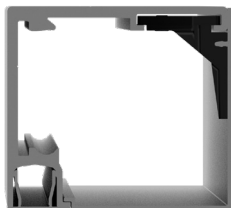
Clip for pelmet cover with
geometry designed to reinforce
rigidity and straightness.



Small dimensions,
great performance.

Tracks

/Cube Pelmet Cover



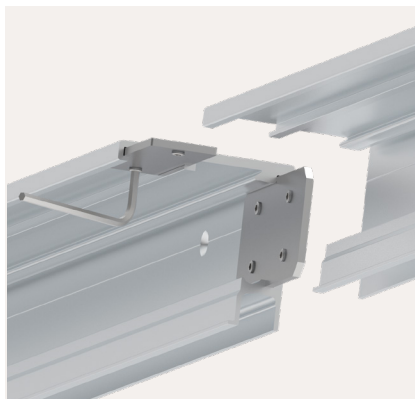
Cube Pelmet Cover: BLOQ concept compactness at maximum expression.



Accessories

/Top tracks connector

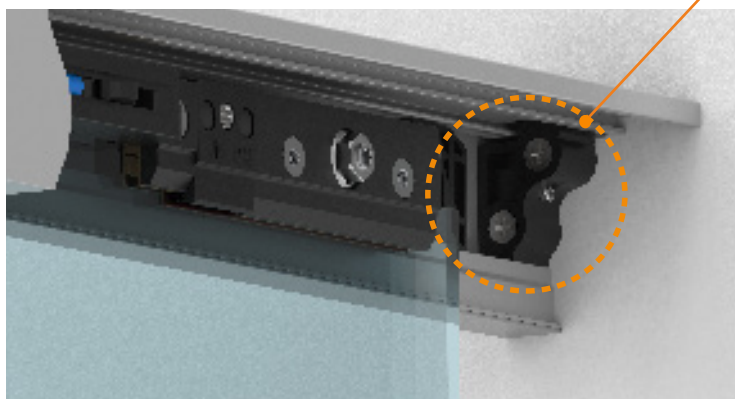
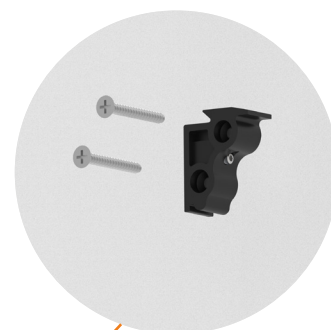
- The track connector **is supplied as an accessory** and is an ideal option for **extending the range of guide lengths while optimizing shipping costs.**
- **The tracks are joined and aligned** using two metallic plates screwed directly onto the profile. **Working with two connection points helps minimize the interference along the roller path,** ensuring a smooth and seamless transition.



7

/Wall to Wall Floating brackets

- Hidden floating wall to wall mounting brackets up to 60Kg. **included in SV-Q60 fitting sets and kits.**
- **Straightforward installation** of the top track by clipping it frontally into the wall brackets, with lateral fixation to the track.



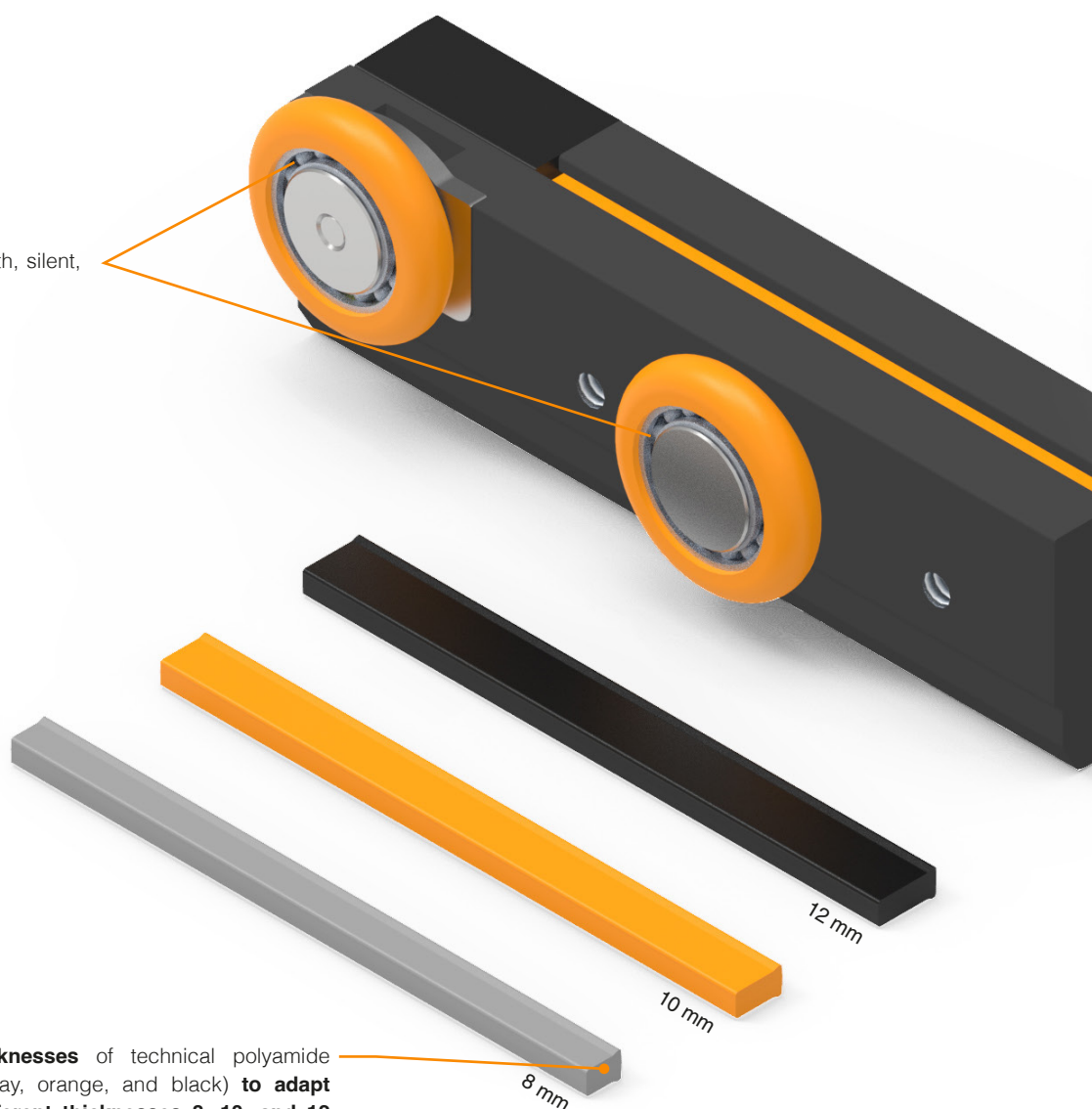
WEIGHT 60 | 110Kg

Clamps

The clamp of any sliding door system should be synonymous with quality, safety, ease of installation, and durability; BLOQ meets all these requirements and, on top of that, it dresses in black for the occasion.

Let us tell you more about it.

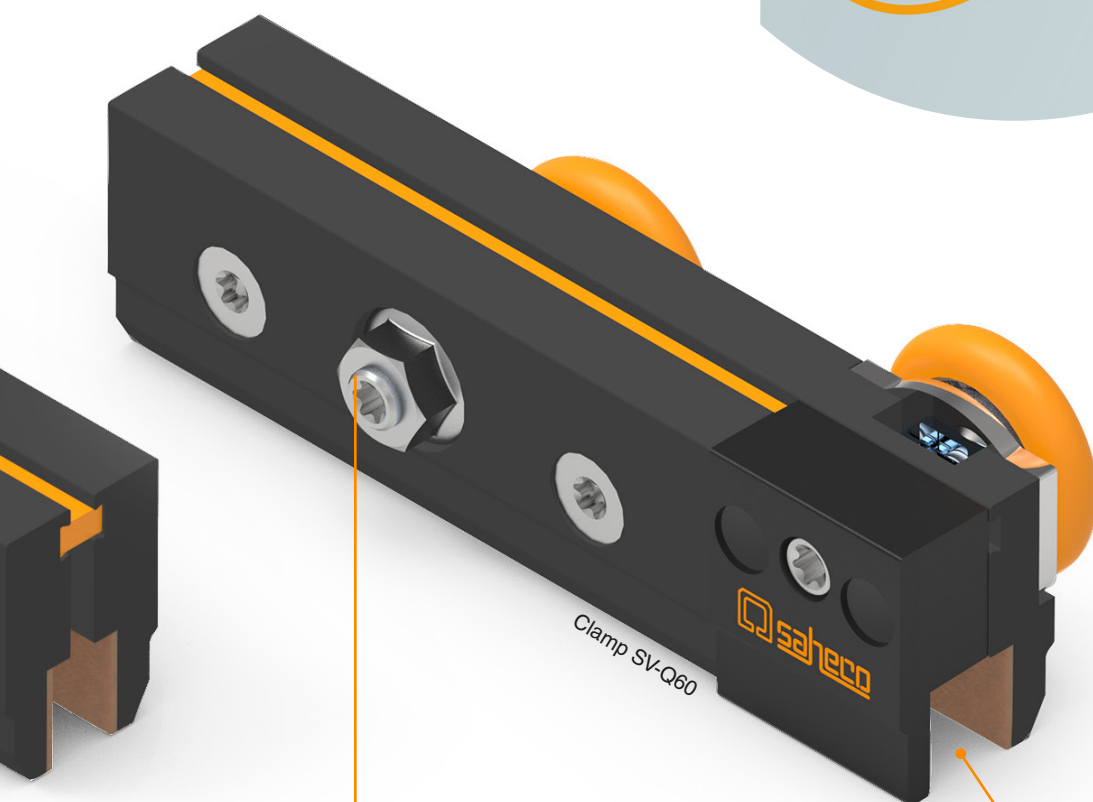
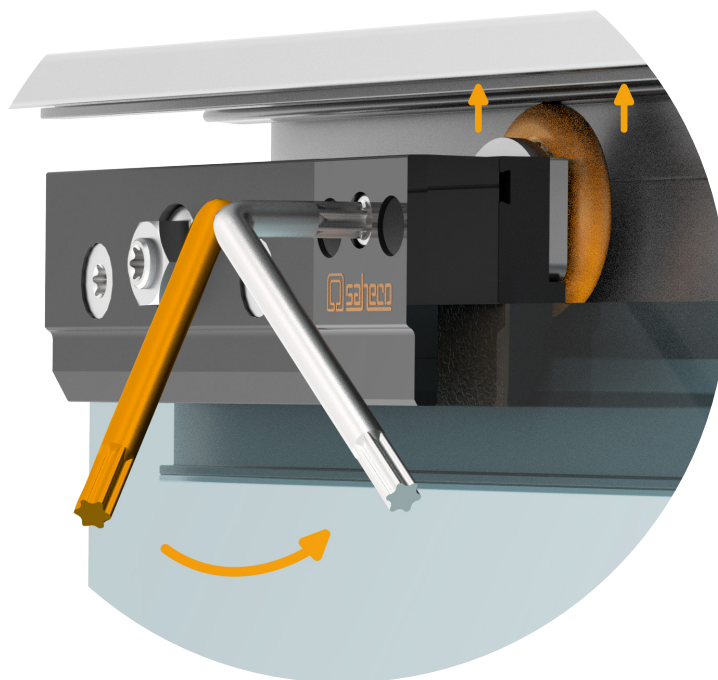
Ball-bearing for smooth, silent, and effortless sliding.



Three different thicknesses of technical polyamide in different colors (gray, orange, and black) **to adapt the clamp to the different thicknesses 8, 10, and 12 mm** (tempered glass) **and 8.76, 10.76, and 12.76 mm** (laminated glass). We bid farewell to glass thickness adjustment screws, embracing a quicker and more efficient fixing alternative.

/Anti-derailment:

- **Innovative technology:** protects the door from derailing even when subjected to sudden movements.
- **Easy installation:** the anti-derailment roller unlocks and locks into the profile with a simple twist of a TX30 key.
- **Highest level of security:** By eliminating clearances, the new anti-derailment system ensures greater security and smoother sliding thanks to the ball bearing roller.



Clamp SV-Q60

Superior traction capacity
compared to previous models.

All **adjustments are frontal**, and **only a TORX® (TX 30) key is required**: the optimal method for screwing thanks to its superior torque transmission and reduced risk of damaging the screw notch.

Bloq in black

Damping system

Damping systems allow for smooth and impact-free closing and opening, extend the product's lifespan, and provide security in your home or office. Can you imagine being able to install them on extremely narrow doors with minimal opening effort? **SofTop makes it possible.**

/SofTop SV-Q60 | SV-Q110

- Installable with a minimum door panel width of only 600mm (SV-Q602) and 680mm (SV-Q110).

• **Double way soft closing** (opening and closing) in the final 10 cm of sliding using a single device.

• **Opening force reduced by 40%** (27N for SV-Q60 and 40N for SV-Q110), providing comfort and easiness of use for all users.

• **Adjustable:** the possibility to add or remove it after installation.

Horizontal placement on the sliding panel ensures **greater stability**.

• Activators that **allow independent adjustment of the panel** at any stage of installation.

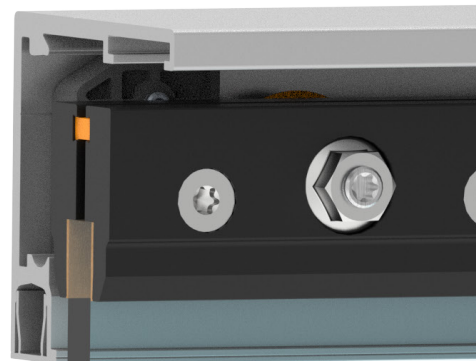
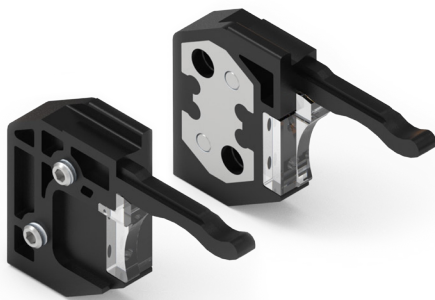
• **All adjustments are frontal**, ensuring a remarkably straightforward installation process.

• **Three different spacer** of technical polyamide in different colors (gray, orange, and black) **that adapt the SofTop clamps to different glass thicknesses of 8, 10, and 12 mm** (tempered glass) and **8.76, 10.76, and 12.76 mm** (laminated glass).

• **Applus+ certification** according to EN 1527 standard for the entire range. Durability grade of **200,000 test cycles** and Corrosion grade 4: 240 hours in a saline chamber. **With SofTop** the durability grade 6: 100,000 cycles and Corrosion grade 4: 240 hours in a saline chamber.

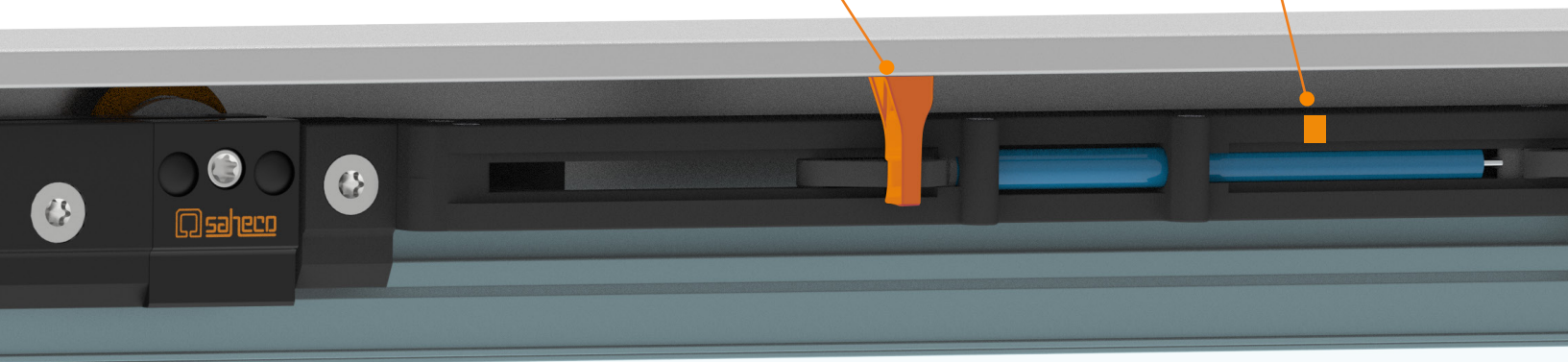
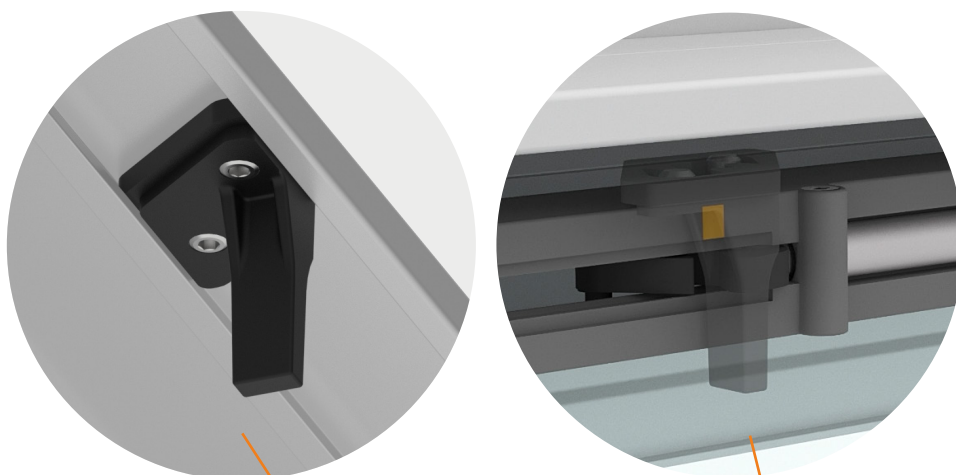
/Retainers (without SofTop installation)

- With **metal inserts for added robustness**.
- **They act directly against the roller**, providing greater retention.
- Retainers **are frontally installable and removable anytime after installation**.

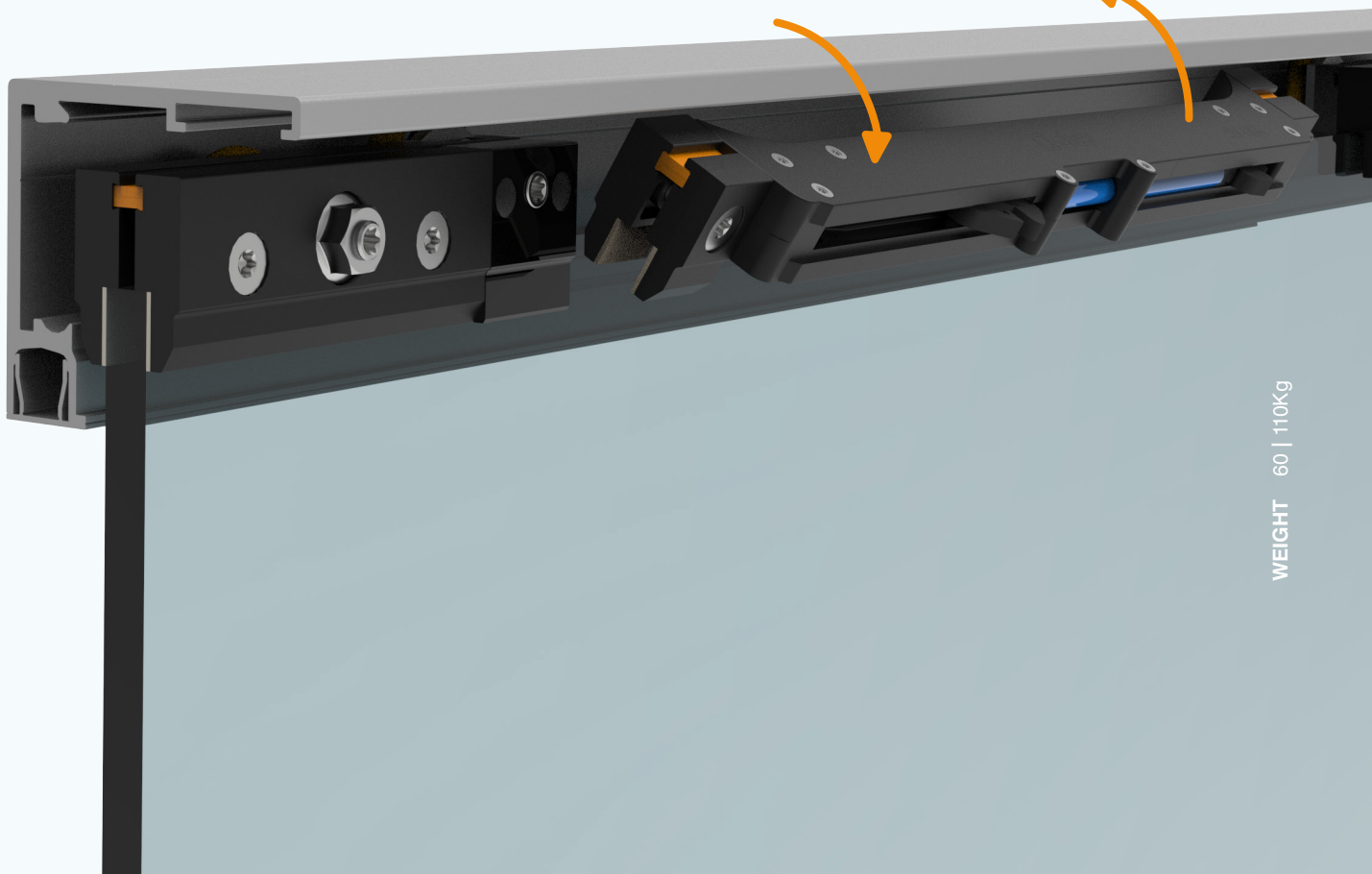


/SofTop activators

- **SofTop operates independently of the height adjustment** of the installation, thanks to the new arrangement of the activators in relation to the SofTop itself. Which is installed horizontally
- Activators made of technical plastic with a **metal insert** to provide an **extra point of rigidity in the fixation**.
- SofTop activators **are frontally installable and removable anytime after installation**.
- For an easy installation of the activators, **the SofTop comes with two marks that indicate the exact position where the activator should be placed**.



Frontally installable and removable anytime after installation



Warranty and sustainability

Excellence in quality is a fundamental part of our corporate culture. With BLOQ, we have set out to go beyond and provide **a system with added value**:

- We offer Applus+ certification according to EN1527 regulations for a **durability of 200,000 cycles** for systems with a retaining brake, thus doubling the previously established standards for the Saheco product.
- We firmly believe in what we do, which is why we are extending the **warranty** from 5 to **10 years**.



High standards, minimal environmental impact



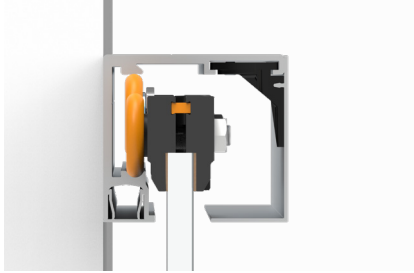
Caring for the environment is caring for ourselves and future generations. BLOQ applies the following practices to help **minimize environmental impact**:

- **As the rest of Saheco systems 100% manufactured in Spain** to minimize the logistical footprint of materials.
- **We have our own plastic injection plant and use recycled materials** in the components of our products.
- **In all our packaging**, we opt for recycled and recyclable cardboard boxes.
- **We work on aluminum recycling**, committed to reducing emissions by extending the lifespan of materials.

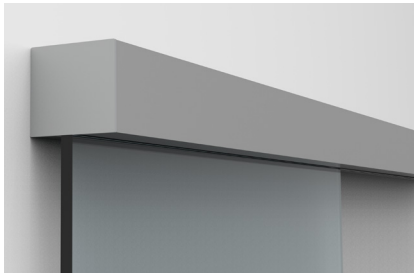
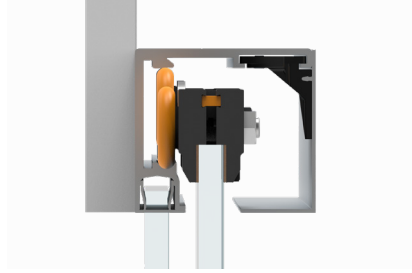


Installation possibilities

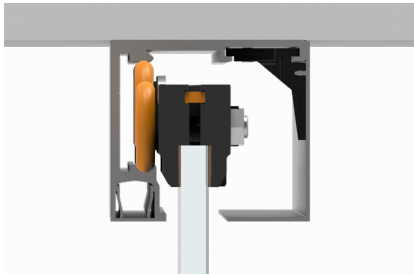
WALL



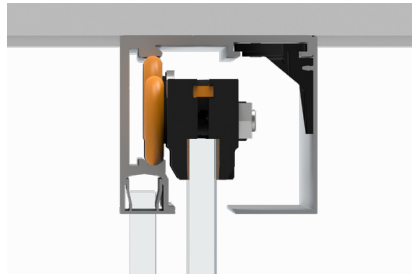
WALL WITH FIXED PANEL



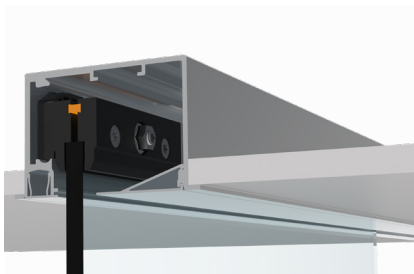
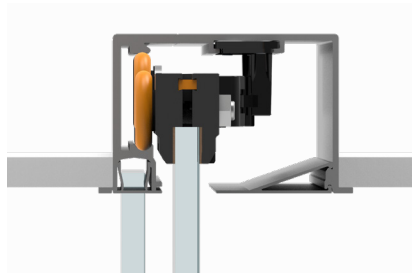
CEILING



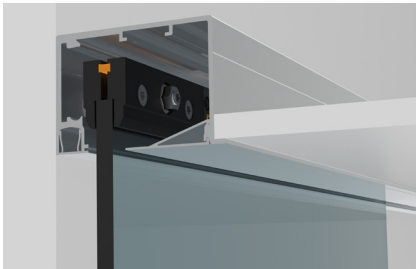
CEILING WITH FIXED PANEL



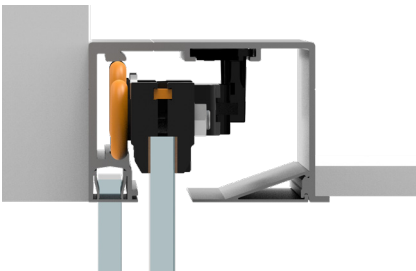
FALSE CEILING



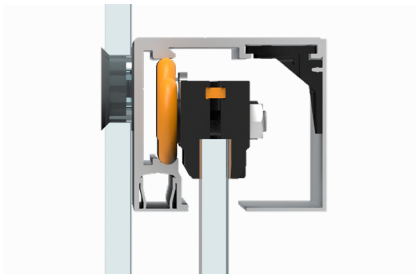
FALSE CEILING WITH LINTEL



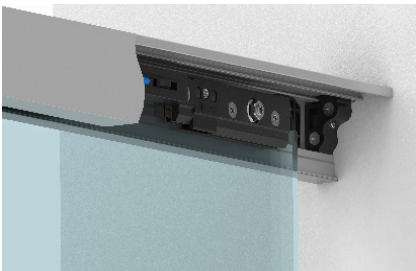
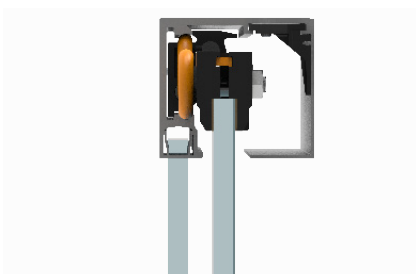
FALSE CEILING WITH LINTEL WITH FIXED GLASS



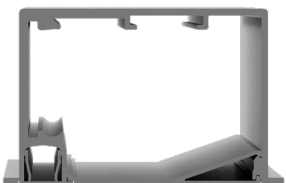
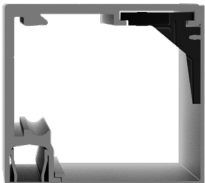
GLASS WALL



WALL-WALL



CUBE PELMET COVER

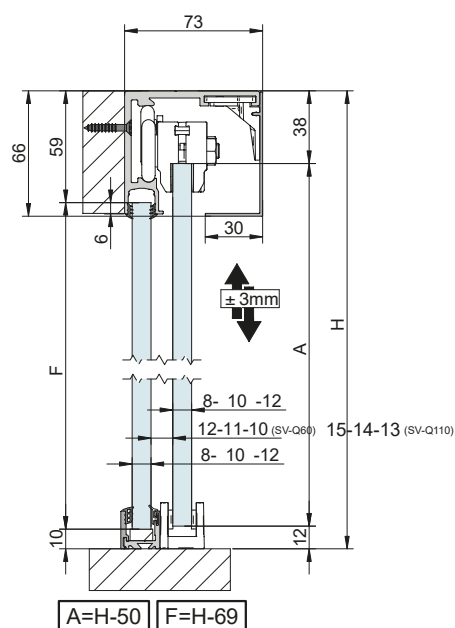
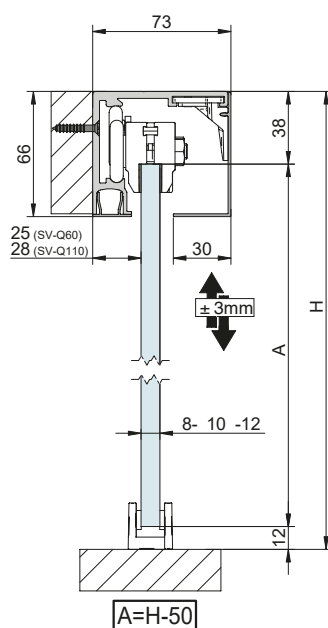


Cross-section

(Dimensions in mm)

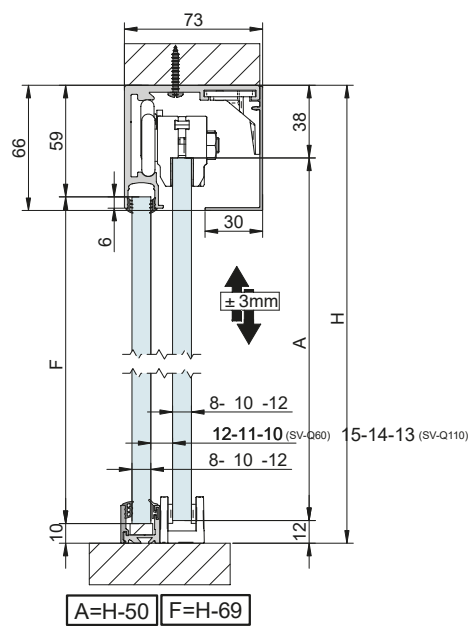
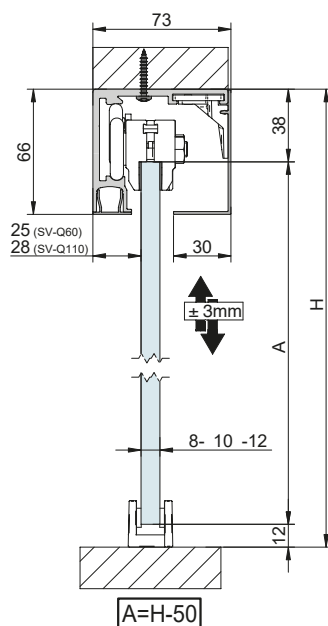
/Wall mounting

SV-Q60
SV-Q110



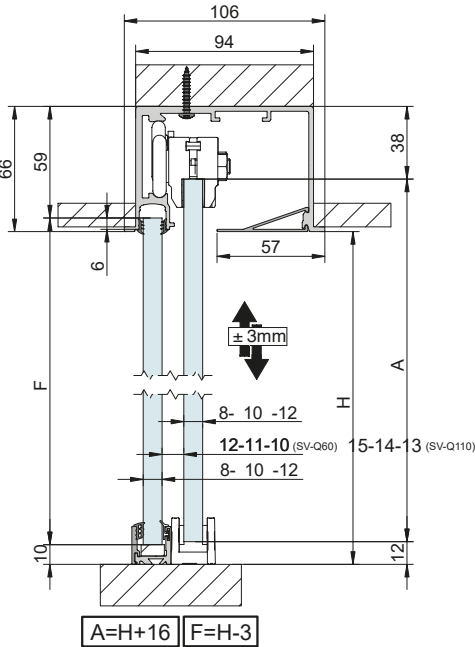
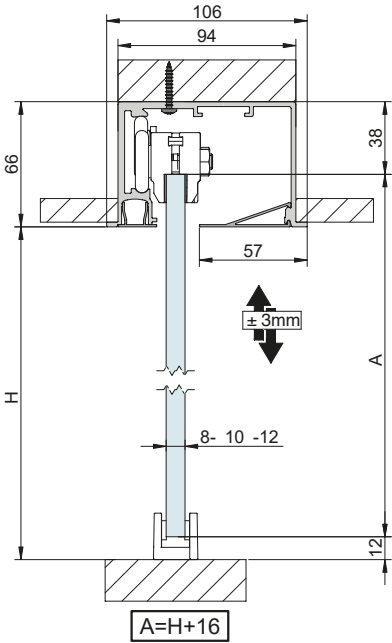
/Ceiling mounting

SV-Q60
SV-Q110



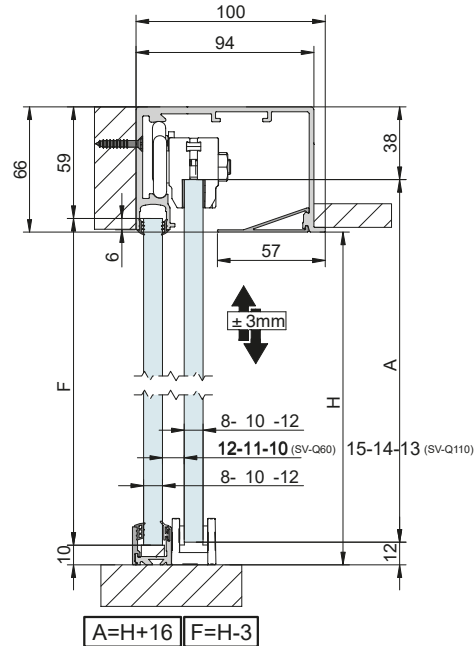
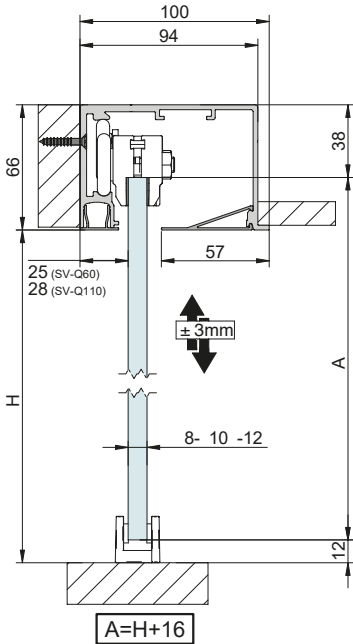
/False ceiling
mounting

SV-Q60
SV-Q110



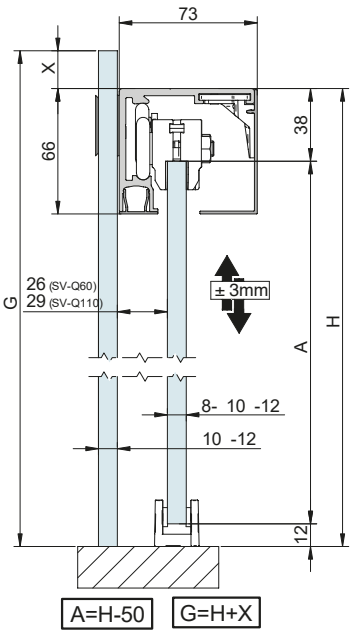
/False ceiling
with lintel

SV-Q60
SV-Q110



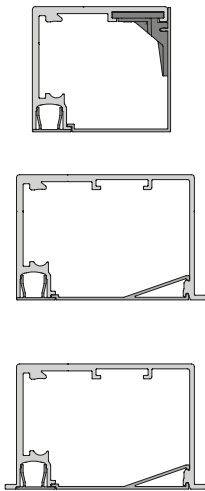
/Glass wall
mounting

SV-Q60
SV-Q110



/Cube
pelmet
covers

SV-Q60
SV-Q110



Components

8 mm
10 mm
12 mm

SV-Q60

12 mm
11 mm
10 mm

SV-Q110

15 mm
14 mm
13 mm

SV-Q60

SOFTOP
600 mm

SV-Q110

SOFTOP
680 mm

WALL-WALL

SOFTOP
MIN. 645 mm

SOFTOP
MAX.60-110Kg

BALL BEARING KIT AVAILABLE

MF

Mill finish
aluminium

S

Satin
anodized
aluminium

WL

White
lacquered
aluminium

BL

Black
lacquered
aluminium

PVCT

Transparent
PVC

PVCB

Black
PVC

SP

Silver
plastic

BP

Black
plastic

WP

White
plastic

18

/Profiles

Finish

Cód.

x10*

BLOQ sliding top track set /
sliding + fixed glass

73x66 mm

MF

0 113 23 2 m
0 113 33 3 m
0 113 43 4 m
0 113 63 6 m

S

0 112 20 2 m
0 112 30 3 m
0 112 40 4 m
0 112 60 6 m

WL

0 112 22 2 m
0 112 32 3 m
0 112 42 4 m
0 112 62 6 m

BL

0 112 23 2 m
0 112 33 3 m
0 112 43 4 m
0 112 63 6 m

1 set

BLOQ FT false ceiling sliding
top track set / sliding + fixed glass

106x66 mm

MF

0 113 24 2 m
0 113 34 3 m
0 113 44 4 m
0 113 64 6 m

S

0 112 24 2 m
0 112 34 3 m
0 112 44 4 m
0 112 64 6 m

WL

0 112 25 2 m
0 112 35 3 m
0 112 45 4 m
0 112 65 6 m

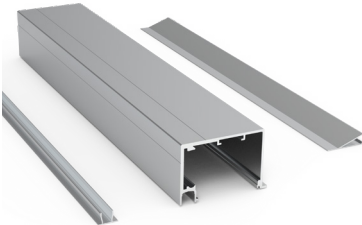
BL

0 112 26 2 m
0 112 36 3 m
0 112 46 4 m
0 112 66 6 m

1 set

*The number of clips varies depending on according to the length of the profile: 2m = 4 clips | 3m = 6 clips | 4m = 8 clips | 6m = 10m

/Profiles



BLOQ FT with lintel false ceiling with lintel sliding track set / sliding + fixed glass.



100x66 mm

Finish	Cód.		
MF	0 113 25	2 m	1 set
	0 113 35	3 m	
	0 113 45	4 m	
	0 113 65	6 m	
S	0 112 27	2 m	
	0 112 37	3 m	
	0 112 47	4 m	
	0 112 67	6 m	
WL	0 112 28	2 m	
	0 112 38	3 m	
	0 112 48	4 m	
	0 112 68	6 m	
BL	0 112 29	2 m	
	0 112 39	3 m	
	0 112 49	4 m	
	0 112 69	6 m	



BLOQ Cube pelmet cover.



55x66 mm

MF	0 113 36		
S	0 113 30	3 m	2 profiles
WL	0 113 31		
BL	0 113 32		

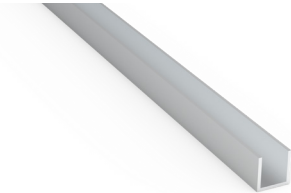


BLOQ Cube FT / FT with lintel pelmet cover.



73x13 mm

MF	0 113 37		
S	0 113 38	3 m	2 profiles
WL	0 113 39		
BL	0 114 30		

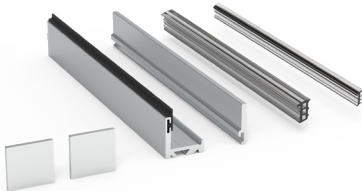


Bottom track for fixed glass of 8-10-12mm



20x20 mm

S	00 87 15	1,5 m	2 profiles
	00 87 30	3 m	
	00 87 60	6 m	
WL	00 88 15	1,5 m	
	00 88 30	3 m	
	00 88 60	6 m	
BL	00 89 15	1,5 m	
	00 89 30	3 m	
	00 89 60	6 m	



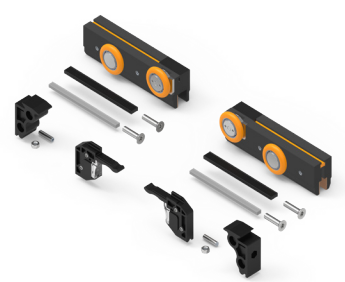
Bottom track front entry for fixed glass of 8-10-12mm



21x20 mm

S	0 110 32 ¹		
WL	0 110 34 ¹	3 m	1 set
BL	0 110 35 ¹		

¹The profile includes the joint + sets of side covers. 2 meters - 2 sets of covers. 3 meters - 4 sets of covers. 6 meters - 6 sets of covers.



SV-Q60 Fitting set. x2 Retaining stopper

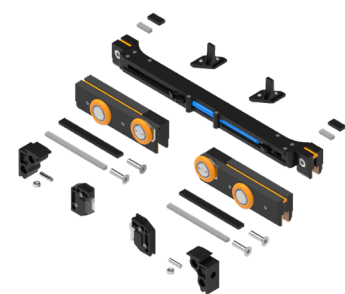
60kg



BALL BEARING

00 62 01

1 set



SV-Q60 Fitting set. x1 Double SofTop

60kg



BALL BEARING

00 62 02

1 set



SV-Q110 Fitting set. x2 Retaining stopper

110kg



BALL BEARING

0 110 01

1 set



SV-Q110 Fitting set. x1 Double SofTop

110kg



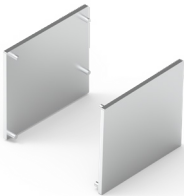











BALL BEARING

0 110 02

1 set

/Accessories

		Finish	Cód.		
	Lateral cap set for sliding top track / with fixed glass. Ceiling and wall mounting  73x66 mm	<div>SP</div> <div>BP</div> <div>WP</div>	00 70 74 00 70 76 00 70 75		1 set
	SV-Q60 double SofTop <div>60kg</div>		00 62 03		1 set
	SV-Q110 double SofTop <div>110kg</div>		0 110 03		1 set
	Clip for BLOQ top tracks. Included in the profile set		0 112 02		10 pieces
	SV-Q60 / SV-Q110 top tracks connector		0 112 01		1 piece
	Glass wall support		00 70 84 ¹		10 pieces
	PVC profile gasket  2x8mm 3x11mm 4x11mm	<div>PVCT</div> <div>PVCB</div>	00 45 82 (2mm) 00 45 87 (3mm) 00 45 84 (4mm) 00 45 83 (2mm) 00 45 90 (3mm) 00 45 85 (4mm)		1 piece
	Bottom guide for glass of 8-14mm	<div>S</div> <div>WL</div> <div>BL</div>	0 155 73 00 71 90 00 71 80		1 piece

¹For sets that incorporate a wall support with 2 m, 3 m, 4 m or 6 m profiling, apply every 400 mm. 2 m - 6 supports wall | 3 m - 8 supports wall | 4 m - 10 supports wall | 6 m - 15 supports wall

/Kits

Finish Cód.  



SV-Q60 kit x2. Retaining stopper
With or without fixed glass.

60kg per panel



73x66 mm



BALL BEARING



0 912 01 2 m
0 912 02 3 m

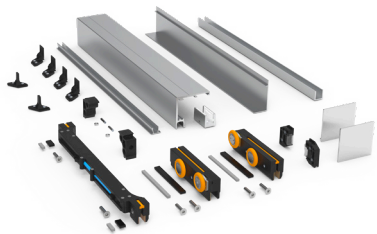


0 912 03 2 m
0 912 04 3 m



0 912 05 2 m
0 912 06 3 m

1 kit



SV-Q60 kit x1. Double SofTop
With or without fixed glass.

60kg per panel



73x66 mm



BALL BEARING



0 912 07 2 m
0 912 08 3 m



0 912 09 2 m
0 912 10 3 m



0 912 11 2 m
0 912 13 3 m

1 kit



SV-Q110 kit x2. Retaining stopper
With or without fixed glass.

110kg per panel



73x66 mm



BALL BEARING



0 912 14 2 m
0 912 15 3 m



0 912 16 2 m
0 912 17 3 m



0 912 18 2 m
0 912 19 3 m

1 kit



SV-Q110 kit. x1 Double SofTop
With or without fixed glass.

110kg per panel



73x66 mm



BALL BEARING



0 912 20 2 m
0 912 21 3 m



0 912 22 2 m
0 912 23 3 m



0 912 24 2 m
0 912 25 3 m

1 kit

/Notes

BLOQ GLASS

SV- Q60 | SV- Q110



Polígono Industrial de Foradada / 08580
St. Quirze de Besora / Barcelona / Spain

T. +34 93 852 96 15
export@saheco.com
saheco.com



Saheco's Exclusive Distributor
Melbourne Office
170 Derrimut Drive Derrimut Vic 3030

Tel. 1300 4 ELITE
sales@eliteglasssolutions.com.au
eliteglasssolutions.com.au

Adelaide Office
7 Manfull St. Melrose Park SA 5039